

General Description

Series RE06M*W proportional relief valves are direct operated single solenoid valves. Control pressure is proportional to solenoid current when used in conjunction with a PCD00A-400 series or equivalent electronic driver card.

RE06*W valve performance is characterized by very low hysteresis and excellent repeatability. Typical applications include precise control of hydraulic pressure with relatively low flow requirements and as a pilot for larger pressure control valves or as a variable pump pressure control.

The RE06*W proportional relief valve supersedes and is a direct replacement for the DSA-P07 relief valve (select the "X" coil option). Note that a shorter bolt kit is required if field replacing a DSA-P07 valve (refer to ordering code page for appropriate Bolt kits).

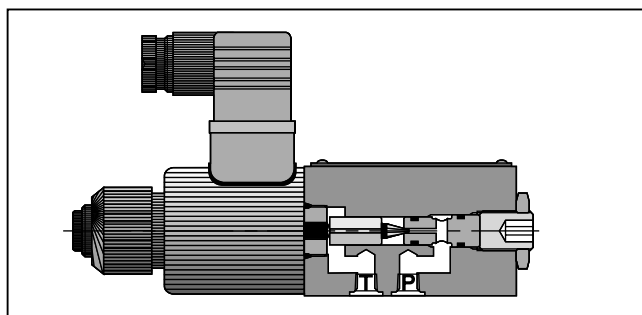
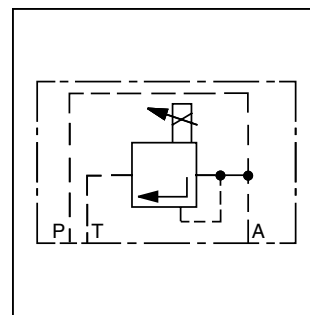
Features

- Standard DIN/ISO/CETOP/NFPA interface.
- Very low hysteresis.
- Excellent repeatability.
- Very low minimum pressure capability.
- Flows up to 5 LPM (1.3 GPM).
- Four pressure ranges available.

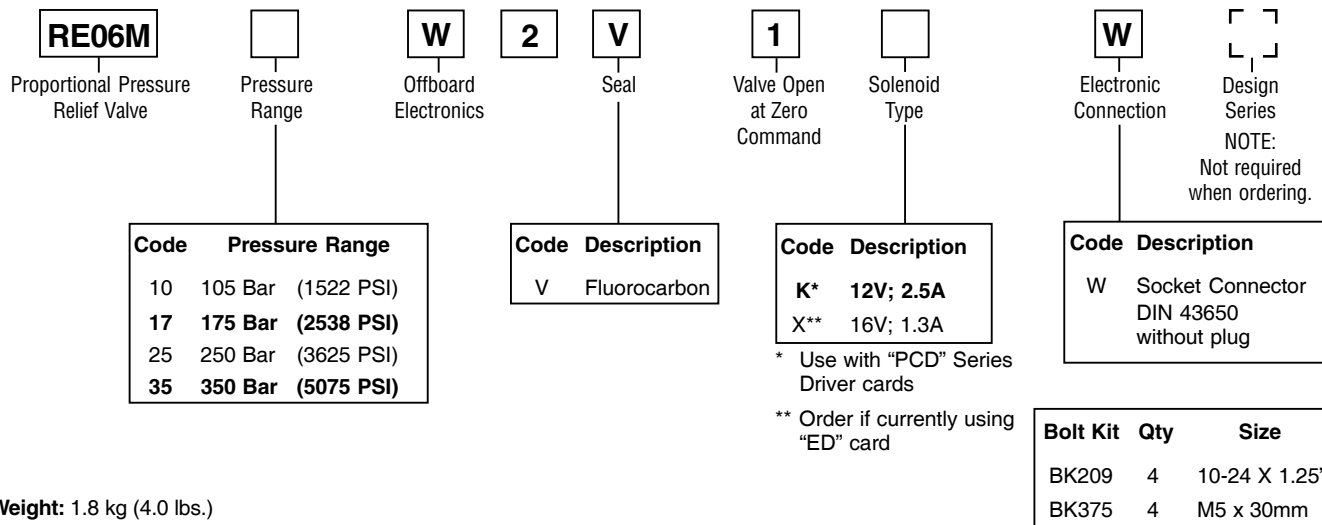
Specifications

General		Hydraulic	
Design	Seated Valve	Operating Pressure	Ports P and A: up to 350 (5075) Port T: up to 210 (3045)
Mounting Pattern	DIN 24340, form A, ISO 6264/CETOP 3	Pressure Range	105, 175, 250, 350 (1522, 2538, 3625, 5075)
Mounting Position	As desired, horizontal mounting recommended	Fluid Temperature	Maximum 80°C (176°F)
Mounting Style	Subplate	Fluid Viscosity, Recommended	80-1000 SSU
Ambient Temperature	-20°C to 70°C (-4°F to +158°F)	Fluid Cleanliness Level	ISO Class 16/15
Electrical		Flow Rate	see performance curves
Voltage	VDC 12 (Coil "K"), 16 (Coil "X")	Linearity	2.8%
Nominal Operating Maximum	Amps 2.5 (Coil "K"), 1.3 (Coil "X")	Repeatability	< ±1%
Coil Resistance	4 Ohm at 20°C (68°F) (Coil K) 11.5 Ohm at 20°C (68°F) (Coil X)	Hysteresis	±1.5% of p_{max}
Duty Cycle	100%	* Plug must be ordered separately	
Electrical Connection	Plug connector 692915* according to DIN 43650/2 pole + PE/Pg11		
Protection Class	IP65 (NEMA 4)		
Amplifier Types	PCD00A-400 Series		
Dither - Recommended	270Hz, 120 mA		

RE06_W.p65, dd



Ordering Information



Weight: 1.8 kg (4.0 lbs.)

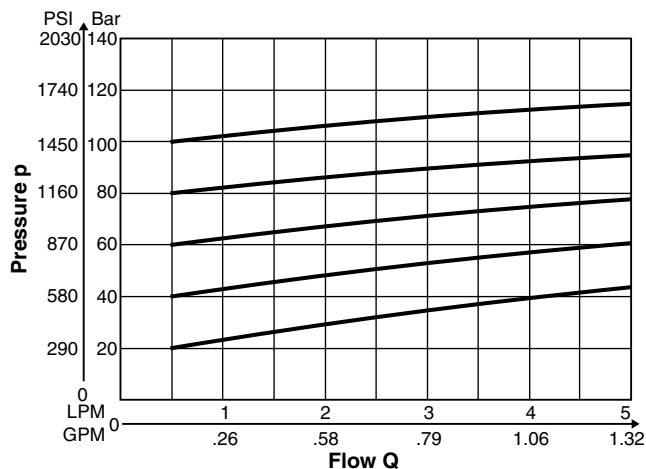
Bold: Designates Tier I products and options.

Non-Bold: Designates Tier II products and options.
These products will have longer lead times.

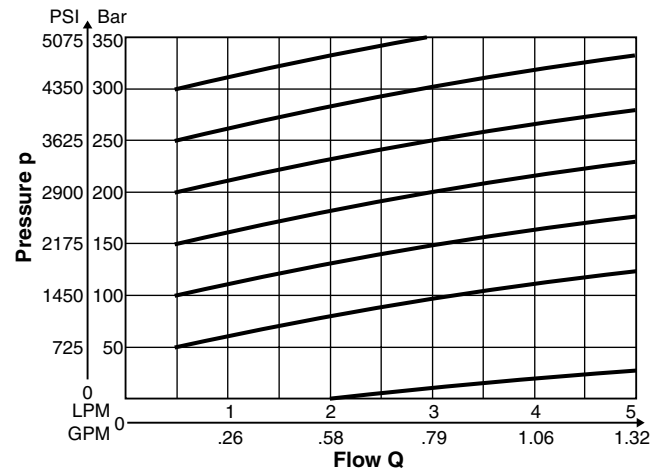
Performance Curves

p/Q Curves

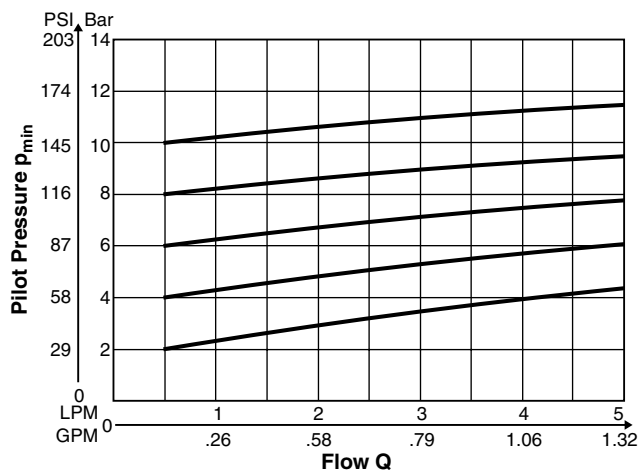
Pressure Stage 105 Bar



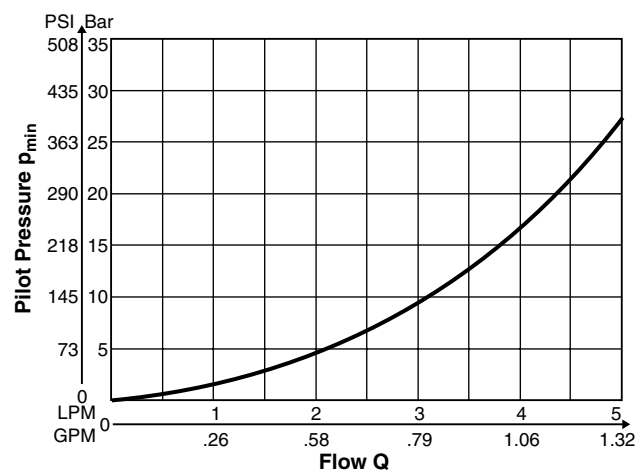
Pressure Stage 350 Bar



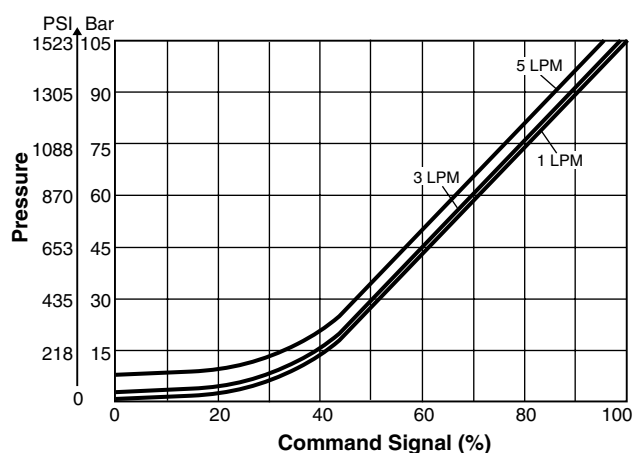
p_{min}/Q curves
Pressure Stage 105 Bar



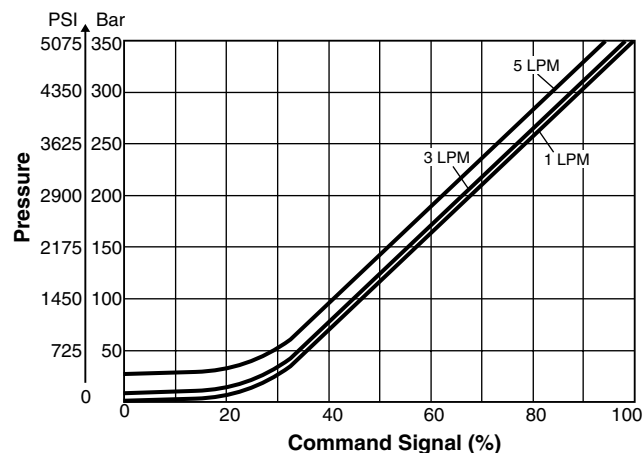
Pressure Stage 350 Bar



$p_{set-voltage}$ Curves
Pressure Stage 105 Bar

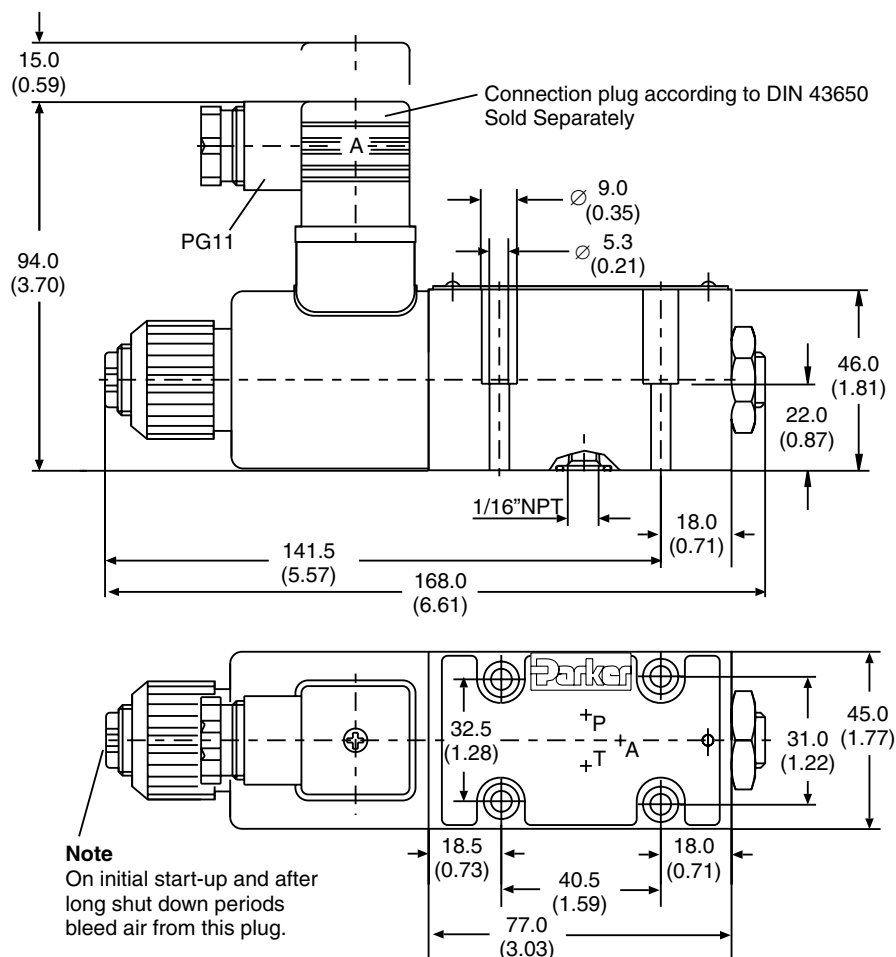


Pressure Stage 350 Bar



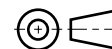
Dimensions

Inch equivalents for millimeter dimensions are shown in (**)



Note

On initial start-up and after long shut down periods bleed air from this plug.



Mounting Pattern ISO 6264-03-04-* -97

