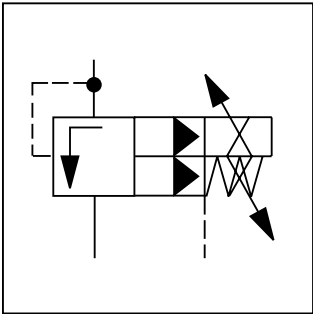


General Description

Series RE\*W proportional pressure relief valves have a proportional solenoid operated pilot stage and DIN cartridge main stage.

Valves are controlled by off-board electronic driver modules. Refer to the electronics section for optional PCD00A-400 driver configurations.

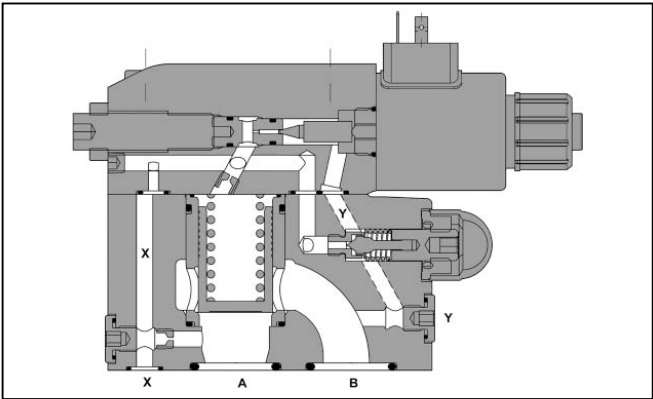


Features

- Standard DIN/ISO interfaces.
- Mechanical maximum pressure adjustment.

Electronics Modules

Refer to the Electronics Section for information on electronic driver modules.



Specifications

Interface	DIN CETOP	NG10 5	NG25 8	NG32 10
Nominal Flow      LPM (GPM)	RE*R	up to 250 (66)	up to 500 (132)	up to 650 (172)
	RE*M	up to 150 (40)	up to 350 (92)	up to 650 (172)
Maximum Operating Pressure	Bar (PSI)	Pressure port P, A, X: 350 (5075); T, Y: not pressurized		
Adjustment Range	Bar (PSI)	10 to 350 (145 to 5075)		
Mounting Pattern		DIN 24340 Form D or E, ISO 5781 and ISO 6264		
Mounting Orientation		Any		

## Ordering Information

<b>RE</b> Proportional Pressure Limiting Valve	<input type="text"/> Size and Interface	<input type="text"/> Mounting Pattern	<input type="text"/> Pressure Range	<b>W</b> Off-Board Electronics	<input type="text"/> Pilot Oil Guide	<b>S</b> Spring	<input type="text"/> Seal	<b>1</b> Valve Open at Zero Command	<input type="text"/> Solenoid Voltage	<b>W</b> Solenoid Connection	<input type="text"/> Special Equipment	<input type="text"/> Design Series NOTE: Not required when ordering.
---	--	--	--	-----------------------------------	---	--------------------	------------------------------	--	--	---------------------------------	---	--

Code	Description
10	NG10/CETOP 5
25	NG25/CETOP 8
32	NG32/CETOP 10

Code	Description
M	DIN 24340 Form D
R	DIN 24340 Form E

Code	Description
K	12V, 2.3 A
X	16V, 1.3 A

Code	Description
N	Nitrile
V	Fluorocarbon

Code	Description
S	1.6 Bar(23 PSI)

Code	Description
W	DIN Socket Connector without plug

Code	Description
Omit	No Mechanical Maximum Pressure Adjustment
M	Mechanical Maximum Pressure Adjustment

Code	Description
10	105 Bar (1522 PSI)
17	175 Bar (2537 PSI)
25	250 Bar (3625 PSI)
35	350 Bar (5075 PSI)

Code	Description	
	Supply	Drain
1**	Internal	External
4*	Internal	Internal

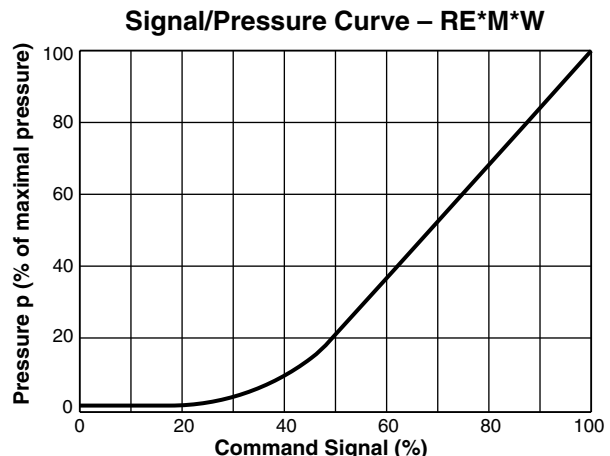
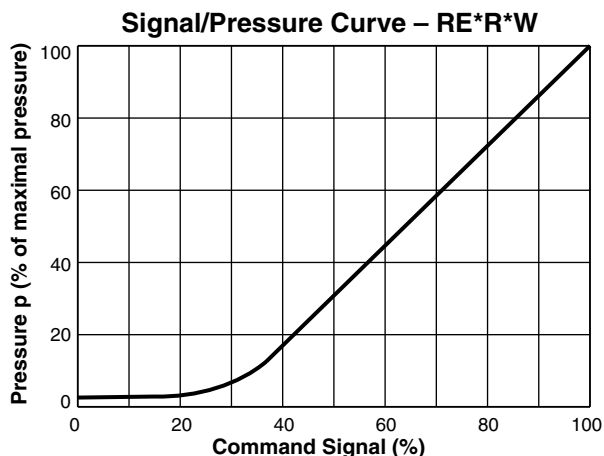
\* Standard  
 \*\* Not for Interface Form E

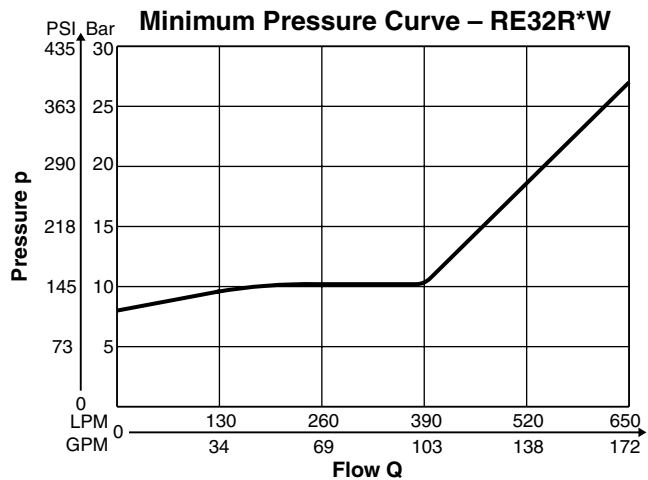
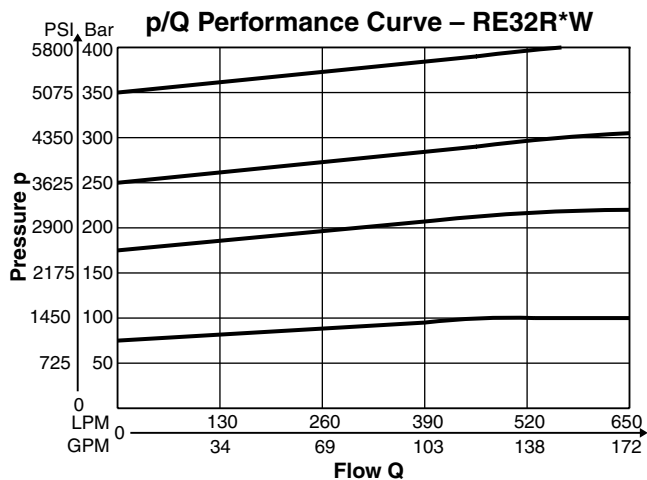
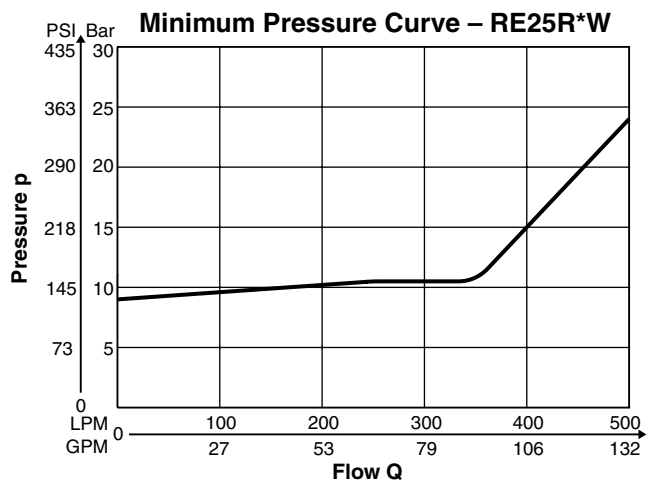
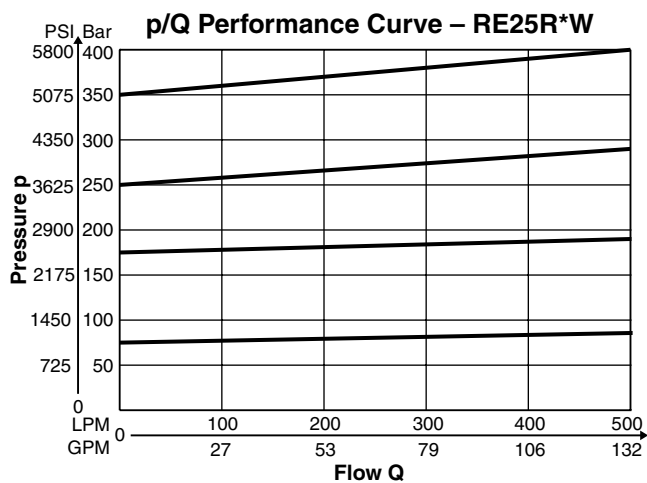
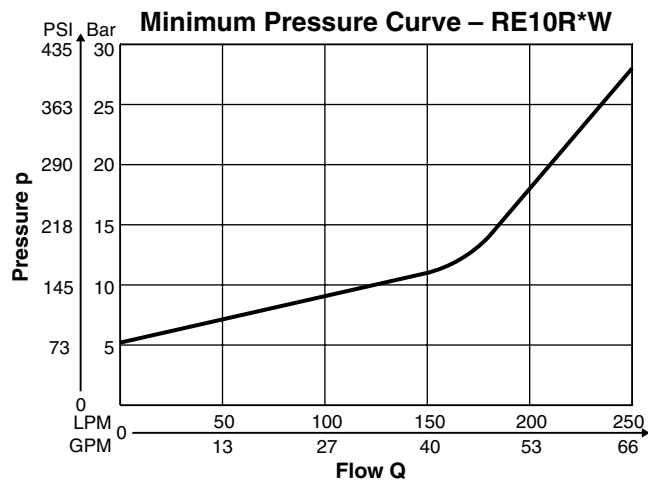
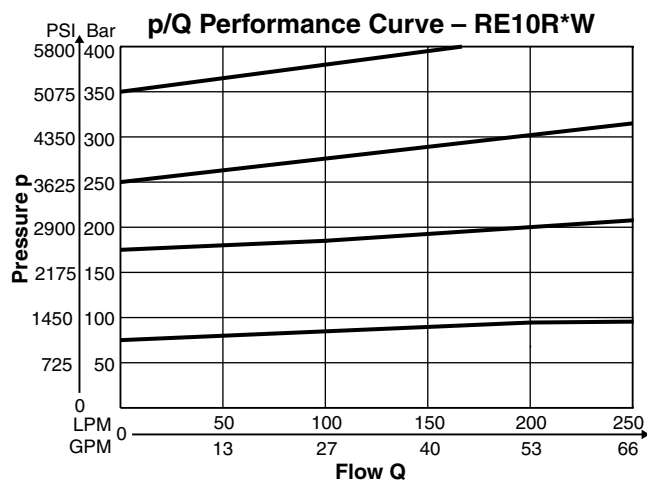
**Weight:**  
**RE\*R**  
 NG10 5.2 kg (11.5 lbs.)  
 NG25 6.4 kg (14.0 lbs.)  
 NG32 8.3 kg (18.3 lbs.)  
**RE\*M**  
 NG10 4.5 kg (9.9 lbs.)  
 NG25 6.3 kg (14.0 lbs.)  
 NG32 7.8 kg (17.2 lbs.)

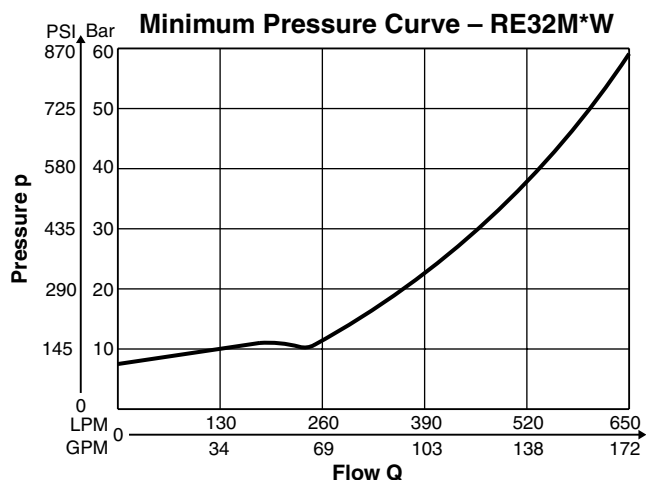
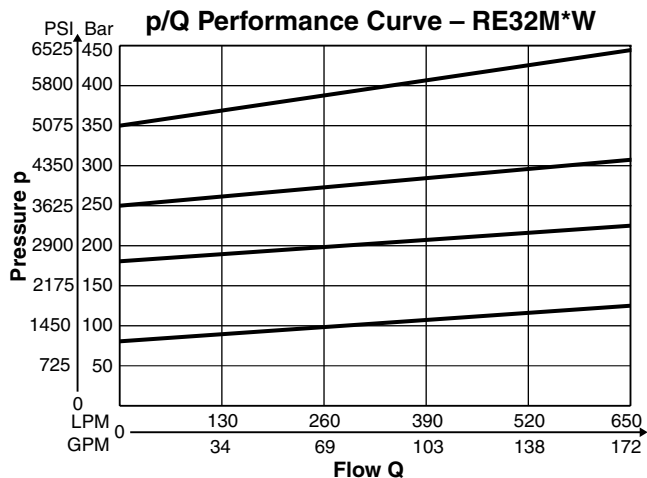
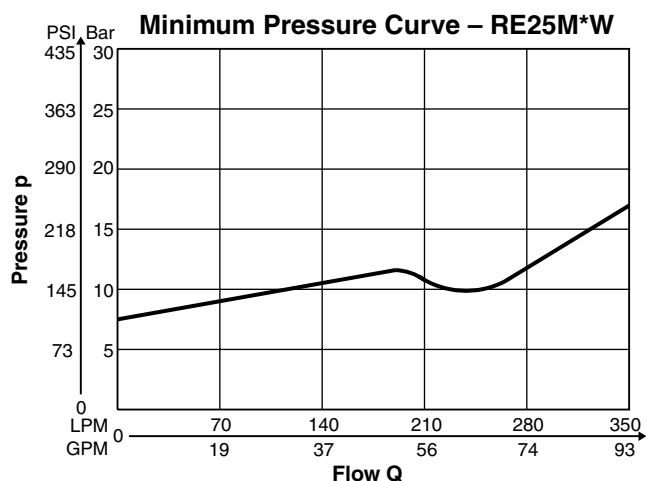
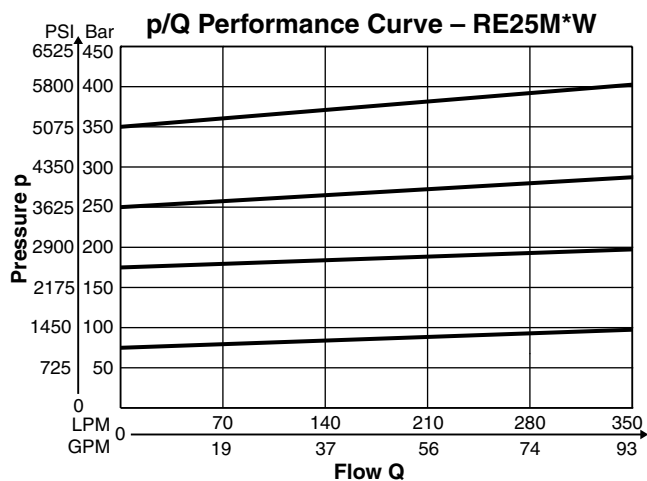
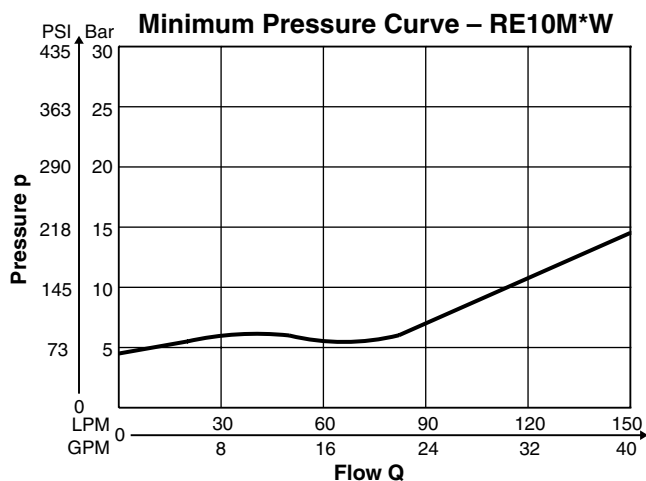
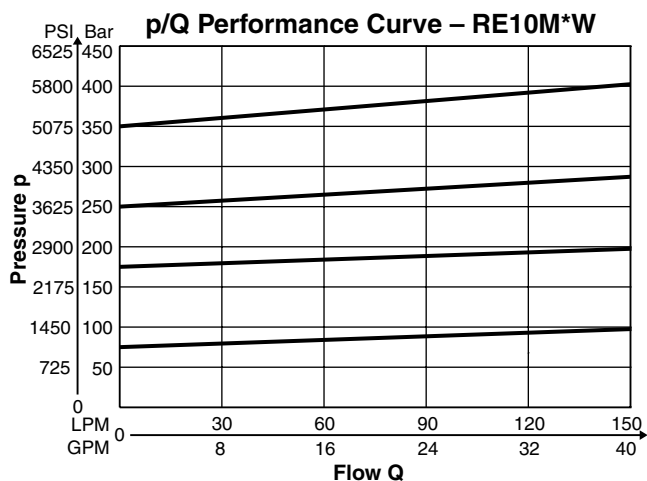
Driver Electronics – PCD00A-400

## Performance Curves



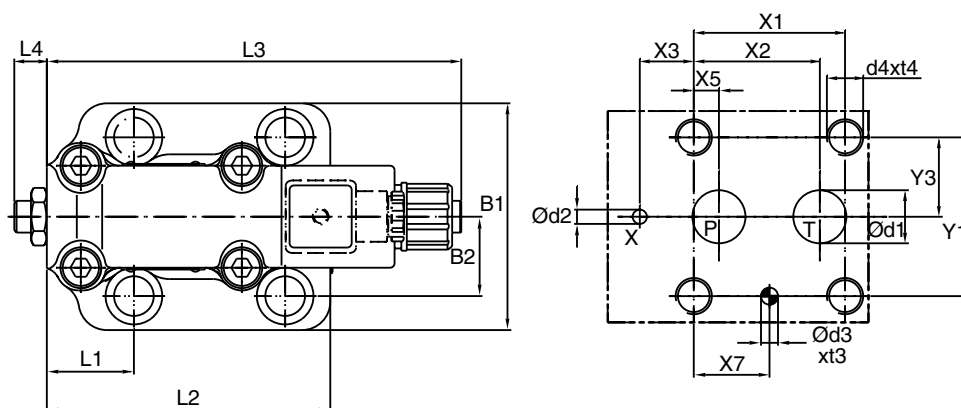
**B**



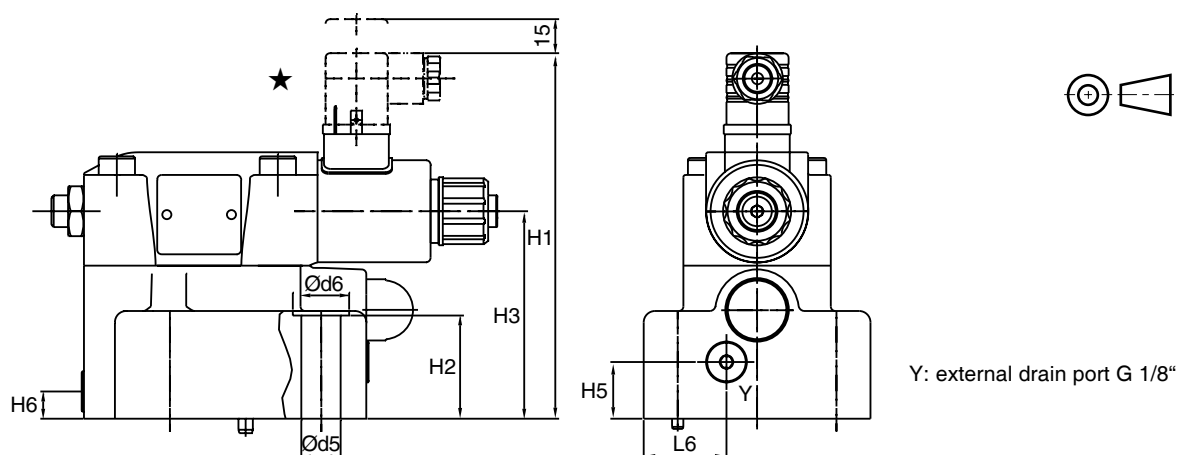


## RE\*R\*W

Dimensions are shown in millimeters.



★ Order plugs separately.

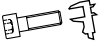



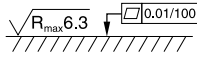
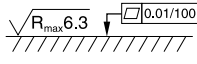


NG	ISO-code	x1	x2	x3	x4	x5	x6	x7	y1	y2	y3	y4	y5	y6
10	6264-06-09-*-97	53.8	47.5	0	-	22.1	-	22.1	53.8	-	26.9	-	-	-
25	6264-08-13-*-97	66.7	55.6	23.8	-	11.1	-	33.4	70	-	35	-	-	-
32	6264-10-17-*-97	88.9	76.2	31.8	-	12.7	-	44.5	82.6	-	41.3	-	-	-

Tolerance at X and Y pin holes and screw holes  $\pm 0.1$ , at port holes  $\pm 0.2$ .

NG	ISO-code	B1	B2	H1	H2	H3	H4	H5	H6	L1	L2	L3	L4	L5	L6
10	6264-06-09-*-97	80	26.9	158.7	27	88	-	25	12	52.5	118.5	182.3	14.4	-	36.5
25	6264-08-13-*-97	100	35	161.2	45.5	91.5	-	25	12	37.9	124.5	182.3	14.4	-	36.5
32	6264-10-17-*-97	120	41.3	166.7	52	97	-	25	12	45	153	182.3	14.4	-	36.5

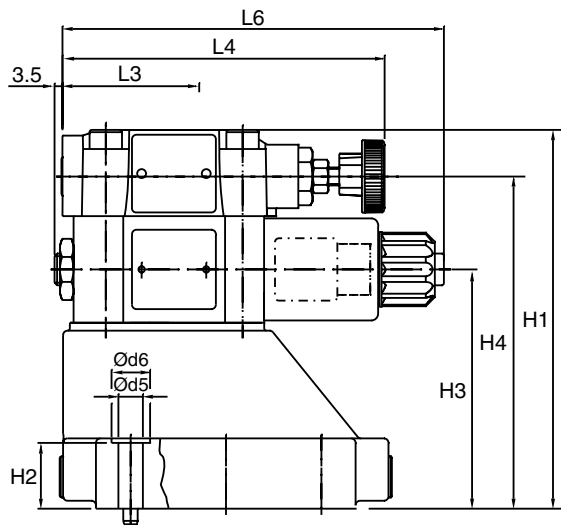
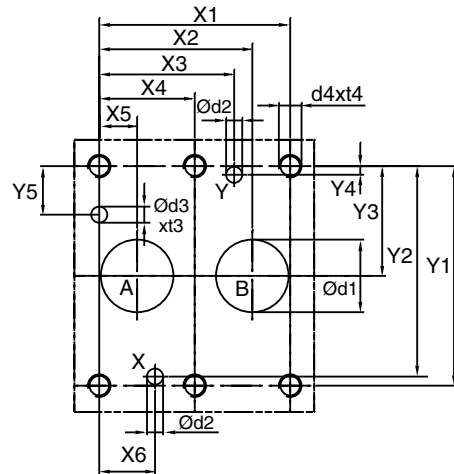
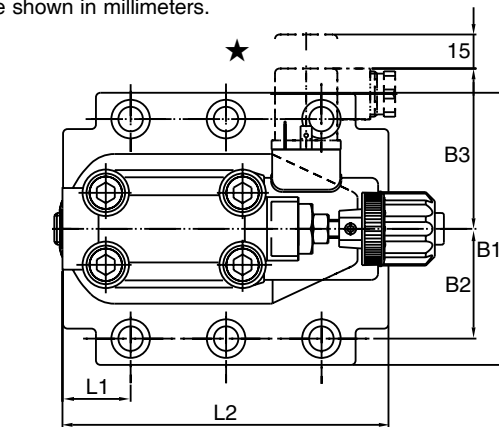
NG	ISO-code	d1max	d2max	d3	t3	d4	t4	d5	d6
10	6264-06-09-*-97	14.7	4.8	7.5	10	M12	20	13.5	20
25	6264-08-13-*-97	23.4	6.3	7.5	10	M16	27	17.5	25
32	6264-10-17-*-97	32	6.3	7.5	10	M18	28	20	30

NG	ISO-code	Bolt kit  DIN912 12.9		Kit  NBR  FPM	Surface finish 
10	6264-06-09-*-97	BK-M12 x 45-4pcs	115 Nm $\pm 15\%$	SK-RE10RN50 SK-RE10RV50	
25	6264-08-13-*-97	BK-M16 x 70-4pcs	281 Nm $\pm 15\%$	SK-RE25RN50 SK-RE25RV50	
32	6264-10-17-*-97	BK-M18 x 75-4pcs	398 Nm $\pm 15\%$	SK-RE32RN50 SK-RE32RV50	

RE\_W.p65, dd

**Dimensions****Proportional Pressure Relief Valves  
Series RE\*W****RE\*M\*W**

Dimensions are shown in millimeters.



★ Order plugs separately.

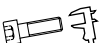




NG	ISO-code	x1	x2	x3	x4	x5	x6	x7	y1	y2	y3	y4	y5	y6
10	6264-06-09-*-97	42.9	35.8	21.5	-	7.2	21.5	0	66.7	58.8	33.4	7.9	14.3	-
25	6264-08-13-*-97	60.3	49.2	39.7	-	11.1	20.6	0	79.4	73	39.7	6.4	15.9	-
32	6264-10-17-*-97	84.2	67.5	59.5	42.1	16.7	24.6	0	96.8	92.8	48.4	3.8	21.4	-

Tolerance at X and Y pin holes and screw holes  $\pm 0.1$ , at port holes  $\pm 0.2$ .

NG	ISO-code	B1	B2	B3	H1	H2	H3	H4	H6	L1	L2	L3	L4	L5	L6
10	6264-06-09-*-97	87.3	33.35	71	130	21	68.5	109.5	-	29	94.8	-	141	-	168.8
25	6264-08-13-*-97	105	39.7	71	156.5	29	95	136	-	34.7	126.8	-	141	-	168.8
32	6264-10-17-*-97	120	48.4	71	167	29	105.5	146.5	-	30.6	144.3	-	141	-	168.8

NG	ISO-code	d1max	d2max	d3	t3	d4	t4	d5	d6
10	6264-06-09-*-97	15	7	7.1	8	M10	16	10.8	17
25	6264-08-13-*-97	23.4	7.1	7.1	8	M10	18	10.8	17
32	6264-10-17-*-97	32	7.1	7.1	8	M10	20	10.8	17

NG	ISO-code	Bolt kit  DIN912 12.9		Kit 	Surface finish
10	6264-06-09-*-97	BK-M10 x 35-4pcs	68 Nm	NBR SK-RE10MN50	FPM SK-RE10MV50
25	6264-08-13-*-97	BK-M10 x 45-4pcs	68 Nm	NBR SK-RE25MN50	FPM SK-RE25MV50
32	6264-10-17-*-97	BK-M10 x 45-6pcs	68 Nm	NBR SK-RE32MN50	FPM SK-RE32MV50

RE\_W.p65, dd