

General Description

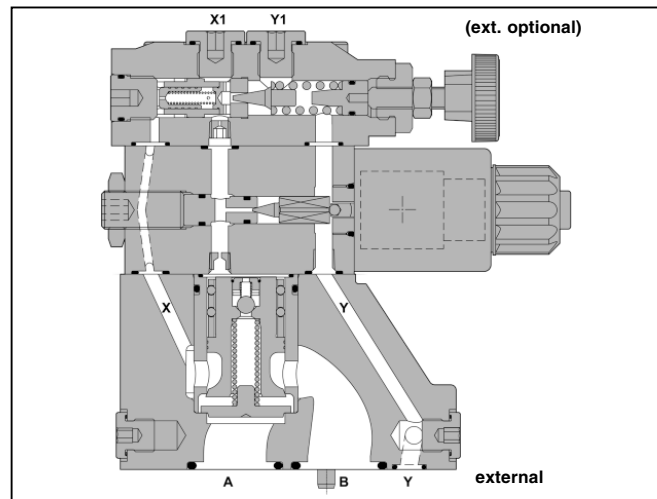
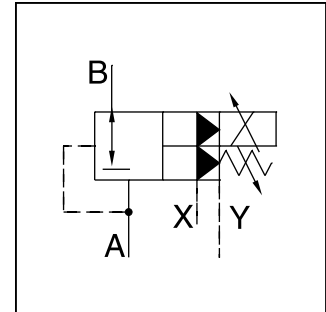
Series PE*W pressure reducing valves have a proportional solenoid operated pilot stage and a spool cartridge main stage.

The control command signal is provided by external electronic modules.

B

Specifications

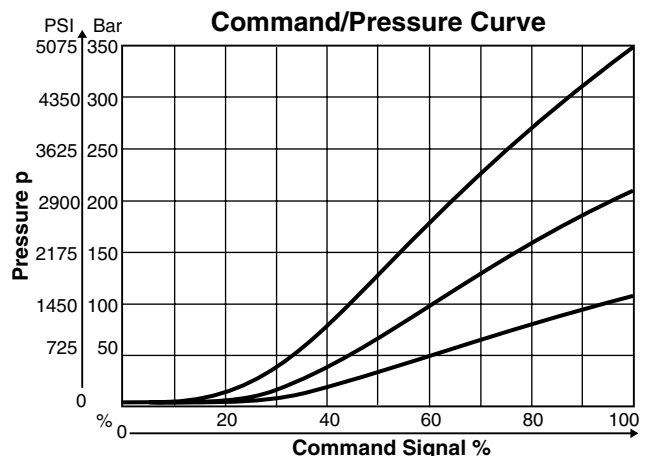
| | |
|--|---|
| Interface | Subplate mounting acc. ISO 5781 |
| Mounting Position | as desired, horizontal mounting preferred |
| Ambient Hydraulic Temperature | -20° to +80°C (-4° to +176°F) |
| Maximum Operating Pressure | Ports A and X 350 Bar (5075 PSI) connection B and Y depressurized |
| Pressure Stages | 107 Bar (1552 PSI) 175 Bar (2538 PSI) 250 Bar (3625 PSI) 350 Bar (5075 PSI) |
| Nominal Flow | Size 10: 150 LPM (40 GPM) Size 25: 350 LPM (93 GPM) Size 32: 650 LPM (172 GPM) |
| Fluid | Hydraulic oil according to DIN 51524 through 51525 |
| Viscosity Recommended Maximum | 30 to 50 mm ² /S (180 to 230 SSU) 20 to 380 mm ² /S (75 to 1850 SSU) |
| Fluid Temperature Recommended Maximum | 30° to +50°C (86° to +122°F) -20° to +70°C (-4° to +158°F) |
| Permitted Contamination | ISO 4406 (1999); 18/16/13 |
| Duty Cycle | 100% ED |
| Protection Class | IP54 at DIN 40050 (plugged and mounted) |
| Nominal Voltage | 12 V |
| Maximum Current | 2.3 amps |
| Ambient Electrical Temperature | -20° to +60°C (-4° to +140°F) |
| Coil Resistance | 4 ohm at 20°C (68°F) |
| Plug Connectors | 2 pole + PE / connector EN 175301-803 / cable Ø 8 to 10mm |
| Power Amplifier | PCD00A-400 |



Features

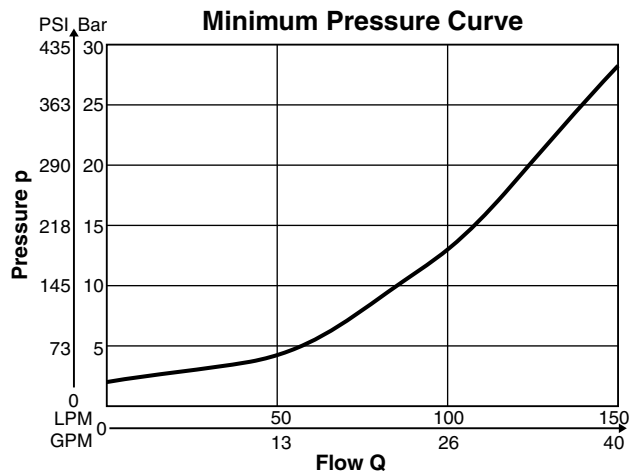
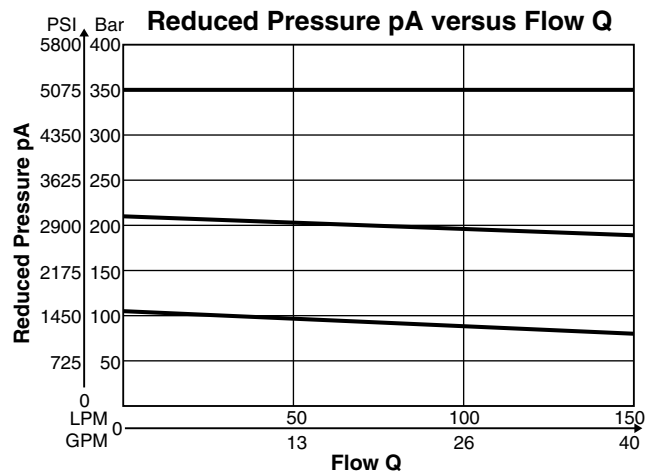
- Pilot-operated with proportional solenoid.
- Continuous adjustment by proportional solenoid.
- Subplate according to ISO 5731.
- Four pressure stages.
- Mechanical maximum pressure adjustment.

Performance Curves

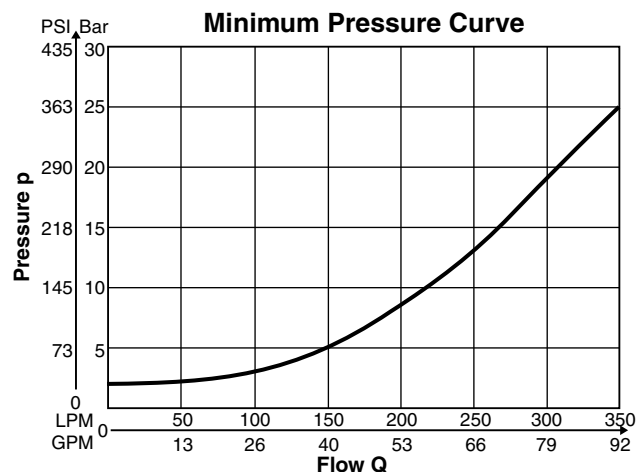
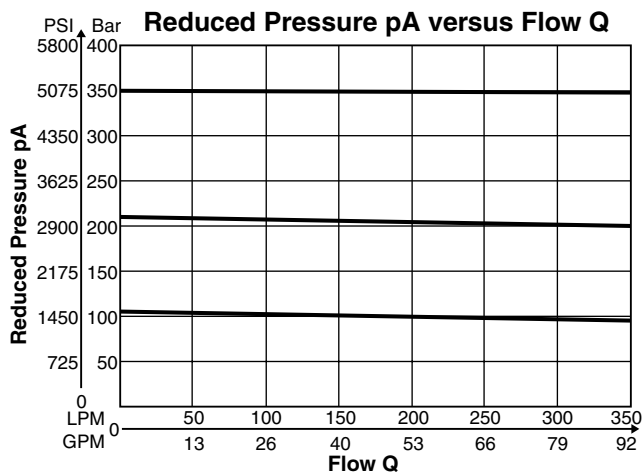


(Continued on the following page)

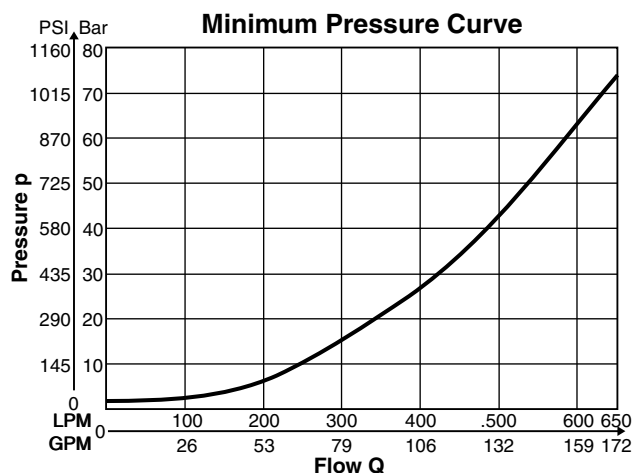
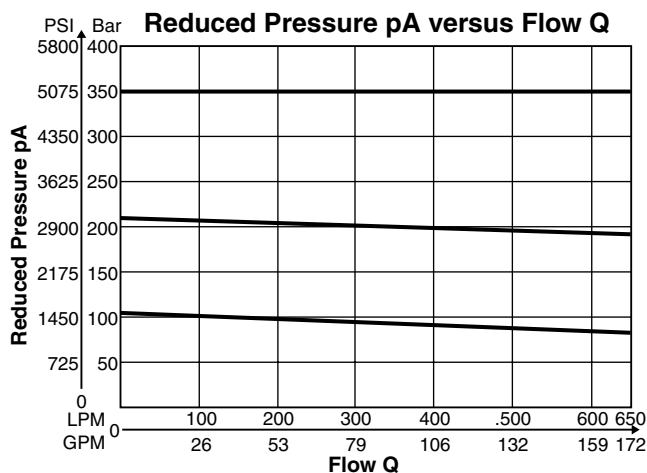
Series PE10M



Series PE25M



Series PE32M



*Measured at 350Bar (5076 PSI) primary pressure pB.

PE_W.dd

B

PE

Proportional Pressure Reducing Valve

M

Interface

W

Off-Board Electronics

1

Pilot Oil: External Drain

P

Poppet Spring

9

Normally Closed

K

Solenoid 12V, 2.3A

W

Without Plug

S02

Spool Type

| Code | Nominal Size |
|------|--------------|
| 10 | NG10 |
| 25 | NG25 |
| 32 | NG32 |

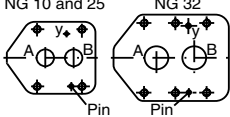
| Code | Pressure Stages |
|------|--------------------------|
| 10 | up to 105 Bar (1522 PSI) |
| 21 | up to 210 Bar (3045 PSI) |
| 35 | up to 350 Bar (5075 PSI) |

| Code | Description |
|------|--------------|
| N | Nitrile |
| V | Fluorocarbon |

| Code | Interface |
|------|----------------------------|
| M | Subplate Mounting ISO 5781 |

NG 10 and 25

NG 32



Valve Weight:


NG10: 2.7 kg (6.0 lbs.)

NG25: 4.5 kg (9.9 lbs.)

NG32: 6.0 kg (13.2 lbs.)

Driver Electronics – PCD00A-400

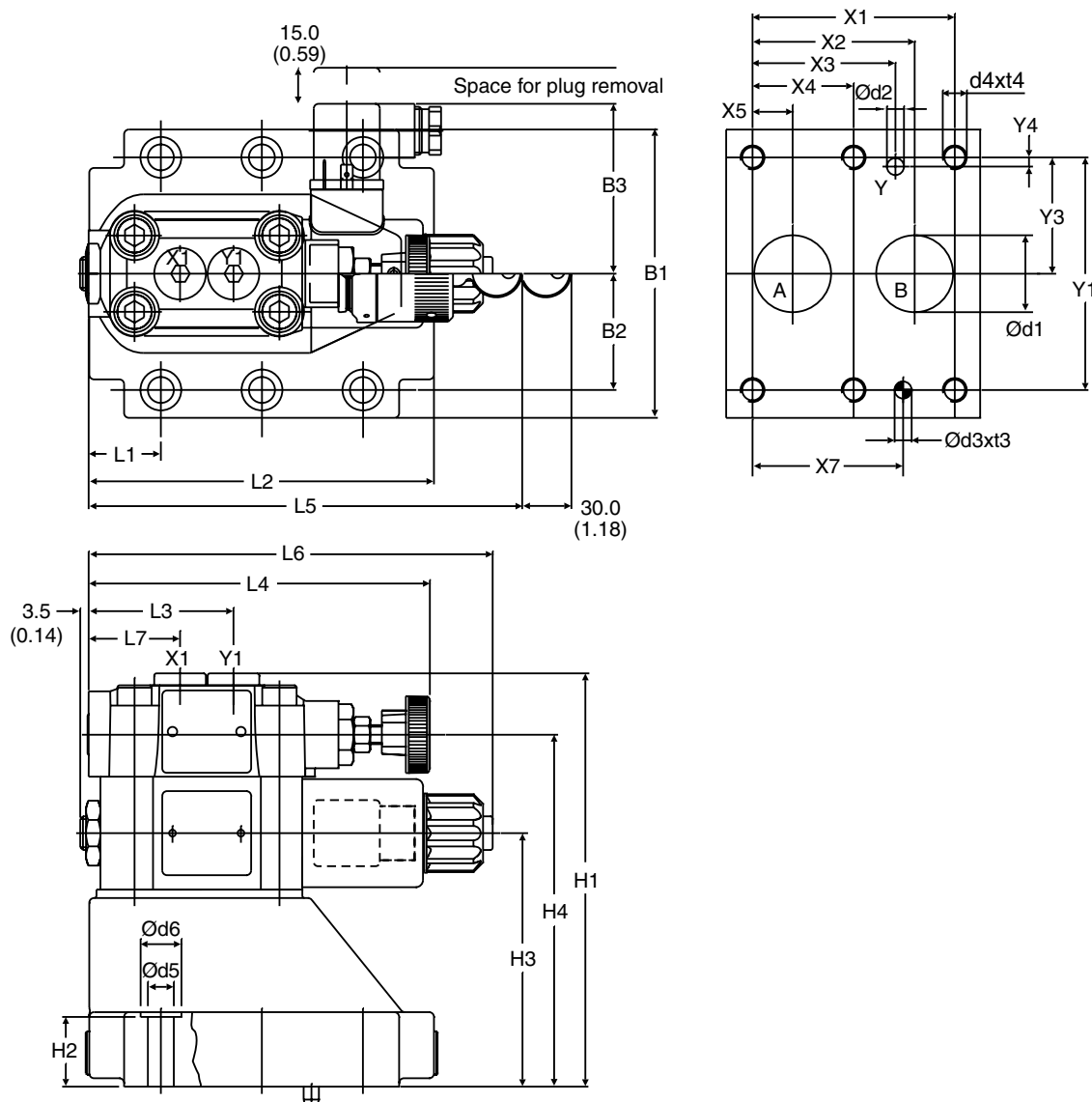
PE_W.dd



B30

Parker Hannifin Corporation
Hydraulic Valve Division
Elyria, Ohio, USA

Inch equivalents for millimeter dimensions are shown in (**)








| NG | ISO-code | x1 | x2 | x3 | x4 | x5 | x6 | x7 | y1 | y2 | y3 | y4 | y5 | y6 |
|----|-----------------|------|------|------|------|------|----|------|------|----|------|-----|----|----|
| 10 | 5781-06-07-0-00 | 42.9 | 35.8 | 21.5 | - | 7.2 | - | 31.8 | 66.7 | - | 33.4 | 7.9 | - | - |
| 25 | 5781-08-10-0-00 | 60.3 | 49.2 | 39.7 | - | 11.1 | - | 44.5 | 79.4 | - | 39.7 | 6.4 | - | - |
| 32 | 5781-10-13-0-00 | 84.2 | 67.5 | 59.5 | 42.1 | 16.7 | - | 62.7 | 96.8 | - | 48.4 | 3.8 | - | - |

Tolerance for all dimensions ± 0.2

| NG | ISO-code | B1 | B2 | B3 | H1 | H2 | H3 | H4 | L1 | L2 | L3 | L4 | L5 | L6 | L7 |
|----|-----------------|------|-------|----|-------|----|-------|-------|------|-------|------|-----|-----|-------|------|
| 10 | 5781-06-07-0-00 | 87.3 | 33.35 | 71 | 134 | 21 | 68.5 | 109.5 | 29 | 94.8 | 60.8 | 141 | 181 | 168.8 | 38.6 |
| 25 | 5781-08-10-0-00 | 105 | 39.7 | 71 | 160.5 | 29 | 95 | 136 | 34.7 | 126.8 | 60.8 | 141 | 181 | 168.8 | 38.6 |
| 32 | 5781-10-13-0-00 | 120 | 48.4 | 71 | 171 | 29 | 105.5 | 146.5 | 30.6 | 144.3 | 60.8 | 141 | 181 | 168.8 | 38.6 |

| NG | ISO-code | d1max | d2max | d3 | t3 | d4 | t4 | d5 | d6 |
|----|-----------------|-------|-------|-----|----|-----|----|------|----|
| 10 | 5781-06-07-0-00 | 15 | 7 | 7.1 | 8 | M10 | 16 | 10.8 | 17 |
| 25 | 5781-08-10-0-00 | 23.4 | 7.1 | 7.1 | 8 | M10 | 18 | 10.8 | 17 |
| 32 | 5781-10-13-0-00 | 32 | 7.1 | 7.1 | 8 | M10 | 20 | 10.8 | 17 |

| NG | ISO-code | Bolt kit  DIN912 12.9 |  | Kit  | | Surface finish  |
|----|-----------------|--|---|---|-------------|--|
| | | | | NBR | FPM | |
| 10 | 5781-06-07-0-00 | BK-M10 x 35-4pcs | 68 Nm | SK-PE10MN50 | SK-PE10MV50 |  |
| 25 | 5781-08-10-0-00 | BK-M10 x 45-4pcs | 68 Nm | SK-PE25MN50 | SK-PE25MV50 | |
| 32 | 5781-10-13-0-00 | BK-M10 x 45-6pcs | 68 Nm | SK-PE32MN50 | SK-PE32MV50 | |