

General Description

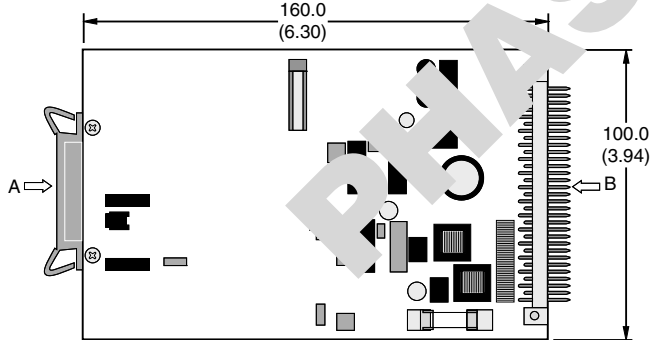
Series ED102 electronic module is used to control DSA/DWE/DWU pressure control valves. The module accepts a 0 to 10 volt command signal and produces a proportionally linear output current used to drive the valve's proportional solenoid. Note that the linearity of the valve itself determines the linearity of the system. Refer to the specific valve data for actual linearity performance.

Features

- Processing and amplification of the externally supplied positive set-values into output signals for the control solenoid.
- Can be combined with EZ150 or external programmable control.
- Pulsed amplifier power stage with constant current control.
- Dither generator with applied frequency to improve static characteristics.
- Diagnosis by means of diagnostic sockets as well as LEDs for indicating working conditions.

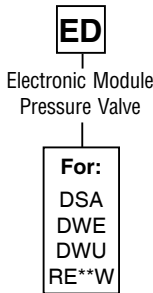
Dimensions

Inch equivalents for millimeter dimensions are shown in (**)

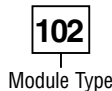


For new applications:
ED102: Refer to PCD00A-400

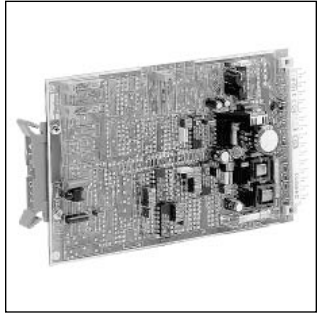
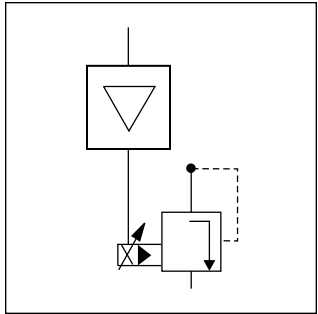
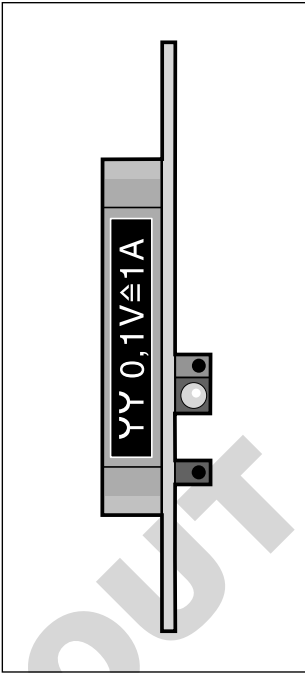
Ordering Information



00



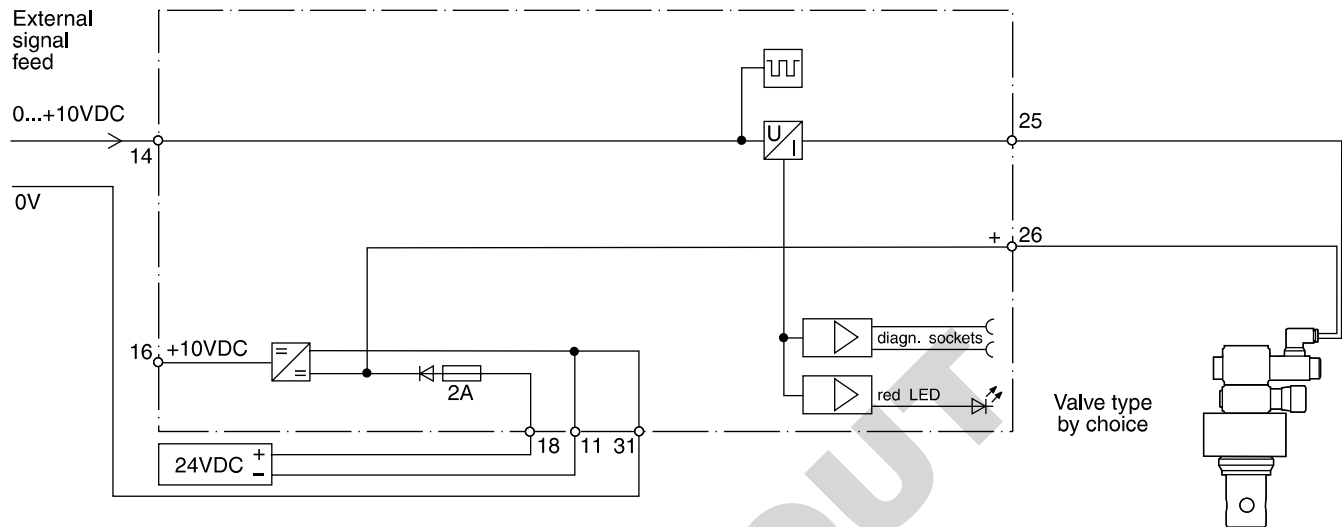
Code	Description
102	Amplifier — Basic



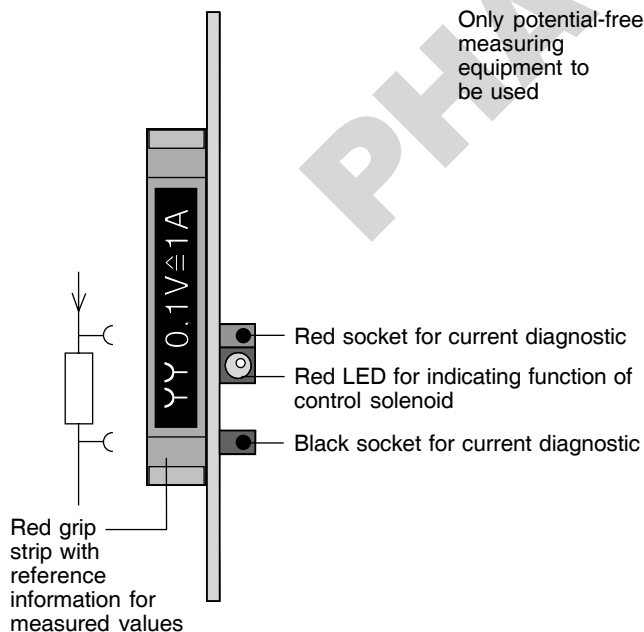
Specifications

Connection	31 Pole Male Connector, DIN 41617
Power Supply	Regulated: 18-26V Unregulated: 22-38V
Power Required	40 VA
Command Signal	0 to +10 VDC
Reference Outputs	+10 VDC @10 mA
Max. Solenoid Output Current	1.3A with set value 10V
Ambient Temp. Range	0°C to +70°C (+32°F to +158°F), Standard Range
Ramps	0 to 5 seconds adjustable
Shielded Cable Connection	Supply connections + valve: 1.5 sq. mm (16 AWG) Command Signals: 0.5 sq. mm (20 AWG)
Fuse	2A medium lag, DIN 41571/5x20 mm

Block Diagram



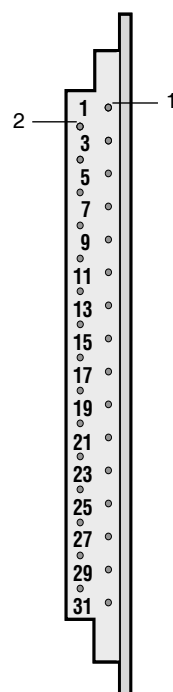
Operating and Diagnostic Elements (Elevation A)



Notes:

- Turn off the electrical power to this board whenever the hydraulic supply to the valve is not on.
- Always turn off the power to this board before removing it from the card holder.

Connector (Elevation B)



- 11 Reference potential 0V supply
- 14 Input command voltage 0...+10 VDC
- 16 Output +10V reference
- 18 Input 24 VDC supply
- 25 Output control solenoid
- 26 Output control solenoid
- 31 Reference potential 0V set value