

General Description

Series 6C check valves provide free flow in one direction and dependable shut-off in the reverse direction.

Operation

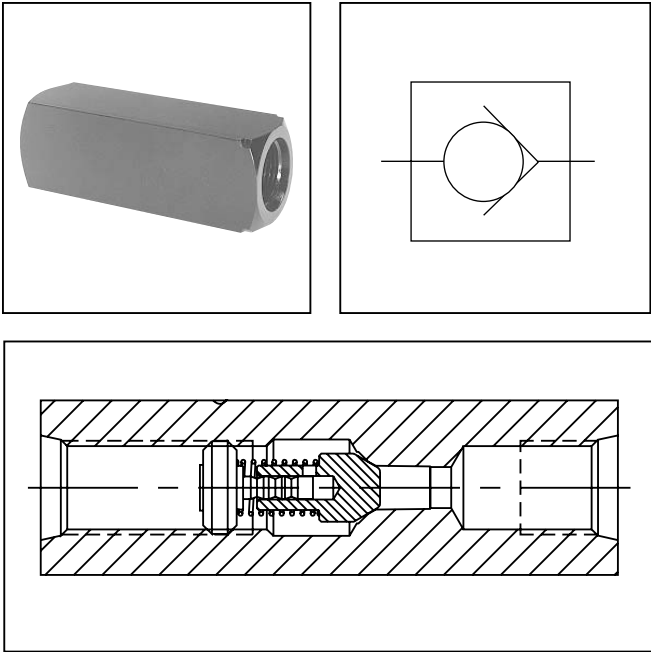
When pressure going through the valve is increased to the cracking level, the valve opens. When the pressure is reduced to below the cracking level, the valve closes.

Features

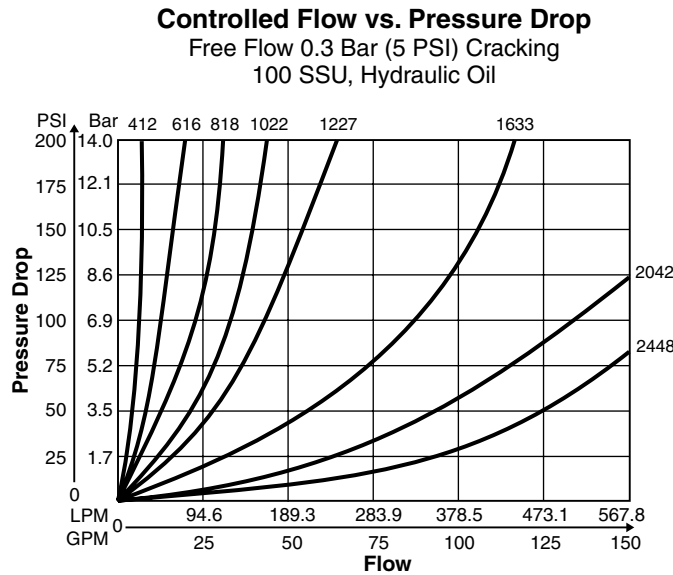
- Meets ISO 6149 standards.
- Hard metric dimensions.
- Reliable leak-free performance — straight thread port with O-Ring sealing.
- Global interchangeability.

Specifications

Maximum Operating Pressure	345 Bar (5000 PSI)		
Maximum Flow	M12 x 1.5	11 LPM (3 GPM)	
	M16 x 1.5	19 LPM (5 GPM)	
	M18 x 1.5	30 LPM (8 GPM)	
	M22 x 1.5	57 LPM (15 GPM)	
	M27 x 2.0	95 LPM (25 GPM)	
	M33 x 2.0	151 LPM (40 GPM)	
	M42 x 2.0	265 LPM (70 GPM)	
	M48 x 2.0	379 LPM (100 GPM)	
Cracking Pressure	Standard: 0.3 Bar (5 PSI) Optional: 0.1 Bar (1 PSI) 4.5 Bar (65 PSI)		
Material	Body	ASTM 12L14	Carbon Steel
	Poppet	ASTM 416	Stainless Steel
	Retainer	ASTM 416	Stainless Steel
	Spring	ASTM 316	Stainless Steel
Seals	Standard: Nitrile Optional: Fluorocarbon		



Performance Curves



Ordering Information

6

Ports

Code

Description

6

ISO 6149 ports

C

Style

Code

Description

C

Check Valve

Size

Code

Ratio

412

M12 X 1.5

616

M16 x 1.5

818

M18 x 1.5

1022

M22 x 1.5

1227

M27 x 2.0

1633

M33 x 2.0

2042

M42 x 2.0

2448

M48 x 2.0

S

Material

Code

Description

S

Steel

Design Series

NOTE:

Not required when ordering.

Model Number

Weight kg (lbs.)

6C412

0.1 (0.3)

6C616

0.2 (0.5)

6C818

0.3 (0.7)

6C1022

0.6 (1.3)

6C1227

0.9 (2.0)

6C1633

1.5 (3.3)

6C2042

2.8 (6.2)

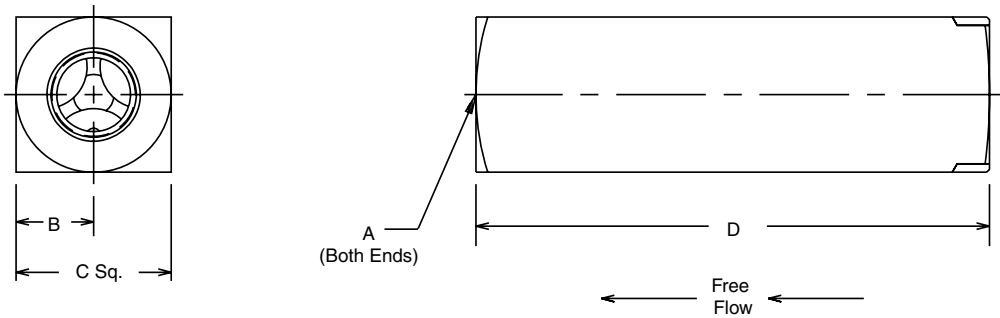
6C2448

3.8 (8.4)



Dimensions

Inch equivalents for millimeter dimensions are shown in (**)



Model Number	Weight kg (lbs.)	A	B	C	D
6C412	0.1 (0.3)	M12 x 1.5	10.4 (0.41)	20.6 (0.81)	68.3 (2.69)
6C616	0.2 (0.5)	M16 x 1.5	12.7 (0.50)	25.4 (1.00)	79.2 (3.12)
6C818	0.3 (0.7)	M18 x 1.5	14.2 (0.56)	28.4 (1.12)	88.9 (3.50)
6C1022	0.6 (1.3)	M22 x 1.5	15.7 (0.62)	31.8 (1.25)	101.6 (4.00)
6C1227	0.9 (2.0)	M27 x 2.0	19.1 (0.75)	38.1 (1.50)	117.3 (4.62)
6C1633	1.5 (3.3)	M33 x 2.0	22.4 (0.88)	44.5 (1.75)	127.0 (5.00)
6C2042	2.8 (6.2)	M42 x 2.0	28.7 (1.13)	57.2 (2.25)	132.8 (5.23)
6C2448	3.8 (8.4)	M48 x 2.0	35.1 (1.38)	69.9 (2.75)	143.0 (5.63)

