

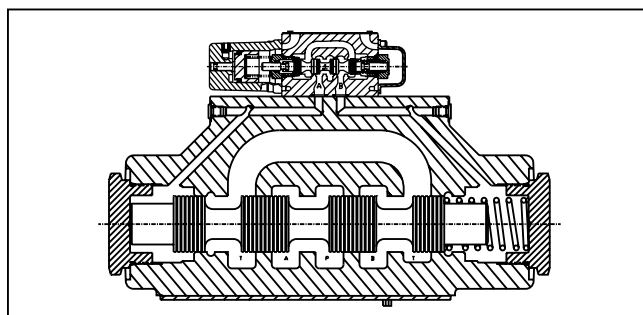
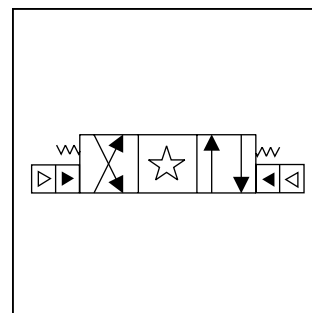
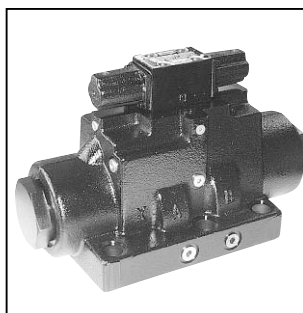
General Description

A

Series D101VA directional control valves are 5-chamber, air pilot operated valves. They are available in 2 or 3-position styles. These valves are manifold or subplate mounted, and conform to NFPA's D10, CETOP 10 mounting pattern.

Specifications

Mounting Pattern	NFPA D10, CETOP 10, NG32
Maximum Operating Pressure	207 Bar (3000 PSI) "T" Port (tank): 34 Bar (500 PSI) With External Drain: 207 Bar (3000 PSI)
Maximum Flow	See Reference Chart
Pilot Pressure	Air Min: 3.4 Bar (50 PSI) Air Max: 10.2 Bar (150 PSI)
Max. Drain Pressure	34 Bar (500 PSI)
Response Time	Varies with pilot line size and length, pilot pressure, pilot valve shift time & flow capacity (GPM)



Features

- Low pressure drop design.
- Hardened spools provide long life.

Ordering Information

D
Directional Control Valve

101V
Basic Valve

A
Air Operated Pilot

Spool

Style

Pilot Supply and Drain

Seal Compound

Variations

Design Series

NOTE:
Not required when ordering.

NFPA D10
CETOP 10

Air Operated Pilot

Valve schematic symbols are per NFPA/ANSI standards, providing flow P to A when energizing operator A. Note operators reverse sides on #8 and #9 spools. See installation information for details.

Code	Symbol
1	
2	
4	
8*	
9**	
11	

* 8 spool has closed crossover.
** 9 spool has open crossover.

Code	Type
N	Nitrile
V	Fluorocarbon

Code	Description
1	Int. pilot/Ext. drain
2	Ext. pilot/Ext. drain
4#	Int. pilot/Int. drain
5	Ext. pilot/Int. drain

Not available with 2, 8 & 9 spools.

Code	Description	Symbol
B†	Sgl. solenoid, 2 position, spring offset. P to A and B to T in offset position.	
C	Dbl. solenoid, 3 position, spring centered.	
H†	Sgl. solenoid, 2 position, spring offset. P to B and A to T in offset position.	

† Available with 1, 2, 4 & 11 spools only.

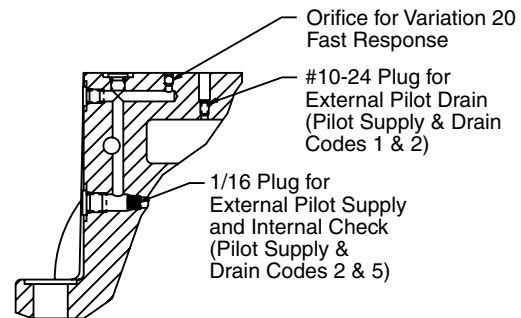
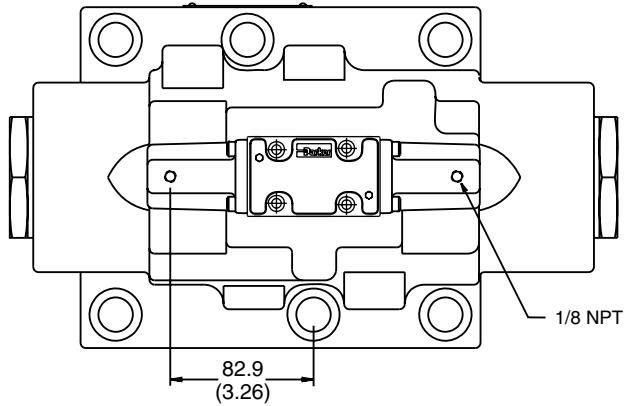
Code	Description
Omit	Standard
7	Pilot choke – meter out
60	Pilot choke – meter in
8	Stroke adj. 'B'
9	Stroke adj. 'A'
89	Stroke adj. 'A' & 'B'
90	BSP Threads

Valve Weight: 35.3 kg (77.8 lbs.)
Standard Bolt Kit: BK229
Metric Bolt Kit: BKM229

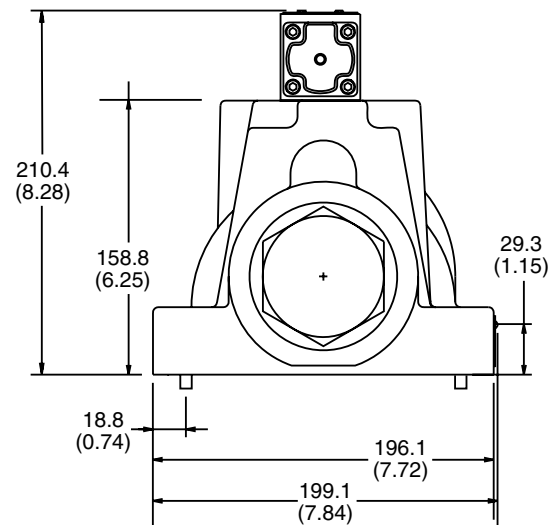
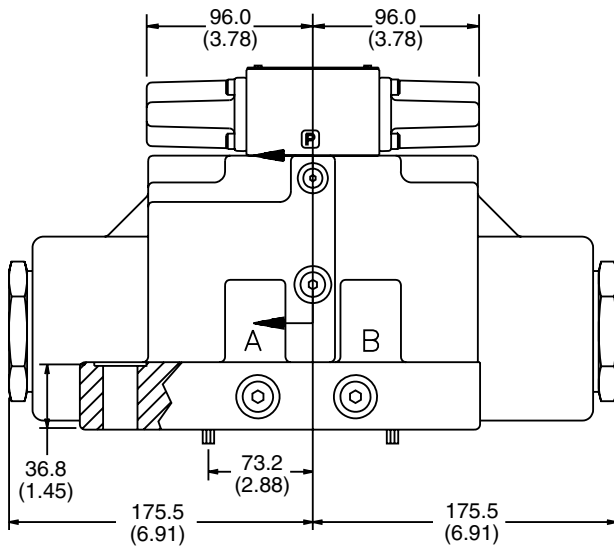
Bold: Designates Tier I products and options.

Non-Bold: Designates Tier II products and options. These products will have longer lead times.

Inch equivalents for millimeter dimensions are shown in (**)

Air Operated**A**

Section A-A

**Note:** 36.83mm (1.45") from bottom of bolt hole counterbore to bottom of valve.