

General Description

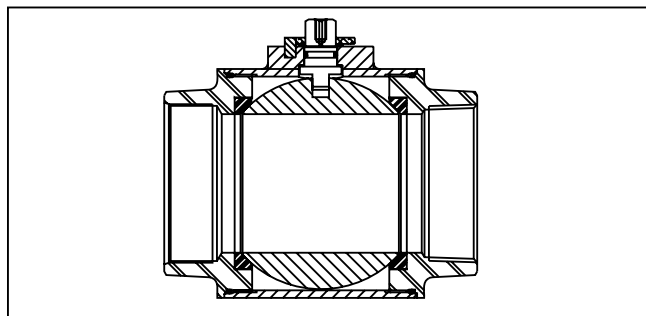
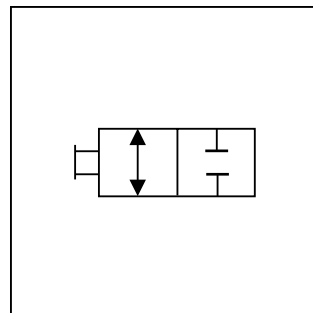
Series BVAM are 2-way ball valves rated at 138 Bar (2000 PSI). This product provides a cost effective solution where 414 Bar (6000 PSI) is not required. Many features found on the 414 Bar (6000 PSI) unit are incorporated in this cost effective product.

Operation

Parker's 2-way ball valves operate to either off or full flow by rotating the handle 90°. Ball valves are not designed to be a metering or flow control device.

Specifications

Maximum Pressure	138 Bar (2000 PSI)
Body Material	Carbon Steel, Black Oxide
Ball Material	Steel, Chrome Plated
Stem Material	Steel, Zinc Plated
Standard Handle	Steel Offset, Nickel Plated
Ball Seals	Delrin + MoS ₂
Spindle Seals	O-Ring & Backup, Nitrile
Operating Temperature	-30°C to +100°C (-22°F to +212°F)

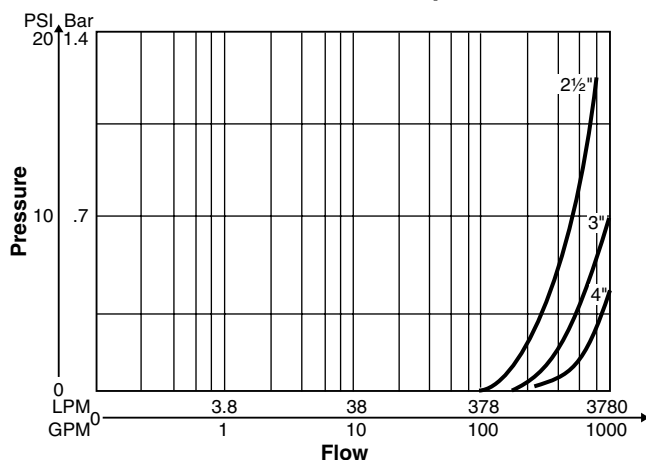


Features

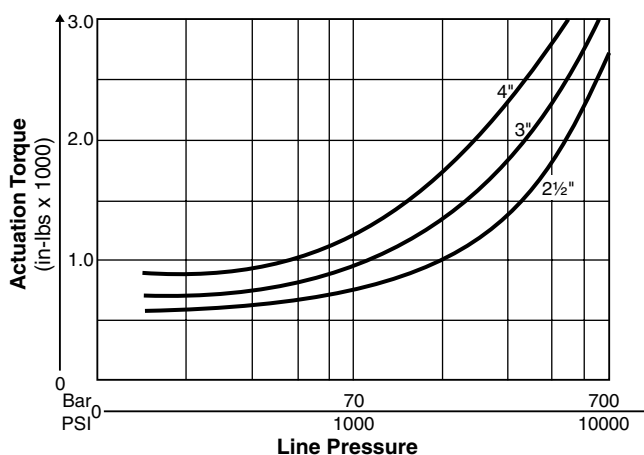
- A full range of threaded porting options allows mounting in most applications.
- The use of MoS₂ mounted ball seals and synthetic lubricant creates a low actuation torque and ensures long life.
- The wide range of spindle and ball sealing materials allows use in most known fluid applications.

Performance Curves

Pressure Drop



Actuation Torque



BVAM

Series

Size

Port

S

Body Material

S

Ball & Stem Material

1

Ball Seals

Stem Seals

Options

Design Series

Code

Size

40

2 1/2"

48

3"

64

4"

Code

Type

N

NPT Thread

S

SAE Thread

B

BSPP Thread

Code

Type

S

Steel

Code

Type

1

Delrin

Code

Type

S

Steel

Code

Type

N

Nitrile

V

Fluorocarbon

E

EPR

Code

Type

A

Locking Handle

B

Security Locking Handle

★C

1 Way Limit Switch

★D

2 Way Limit Switch

*E

Panel Mount

G

Flat Non-offset Handle

★*K

1 Way Limit Switch w/Lock

★L

2 Way Limit Switch w/Lock

* Cannot be combined with other options

** Switch is set to indicate valve open condition

★ When selecting this option, your ball valve will come with the limit switch bracket, but does not include the limit switch. The switch is sold separately (Part #LSB)

Weights

Code

kg (lbs.)

40

12.3 (27.0)

48

16.9 (37.2)

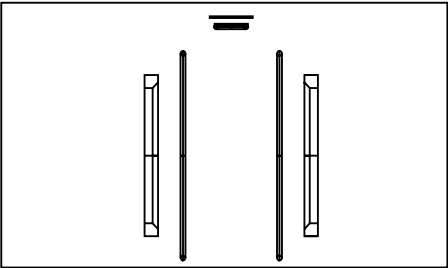
64

24.8 (54.5)

Seal Kit Accessories

Ball Valve Seal Kits restore a ball valve to factory specifications, providing no erosion or metal-to-metal wear has taken place.

The Seal Kit includes all the o-rings, ball seals and thrust bearings that were originally installed at the factory.



Seal Kit Ordering Information

SK

Accessory

BVAM

Series

Size

Port

S

Body Material

S

Ball & Stem Material

1

Ball Seals

Stem Seals

Design Series

Code

Type

SK

Seal Kit

Code

Size

40

2 1/2"

48

3"

64

4"

Code

Type

N

NPT Thread

S

SAE Thread

B

BSPP Thread

Code

Type

S

Steel

Code

Type

S

Steel

Code

Type

1

Delrin

Code

Type

N

Nitrile

V

Fluorocarbon

E

EPR

* Cannot be combined with other options

** Switch is set to indicate valve open condition

★ When selecting this option, your ball valve will come with the limit switch bracket, but does not include the limit switch. The switch is sold separately (Part #LSB)

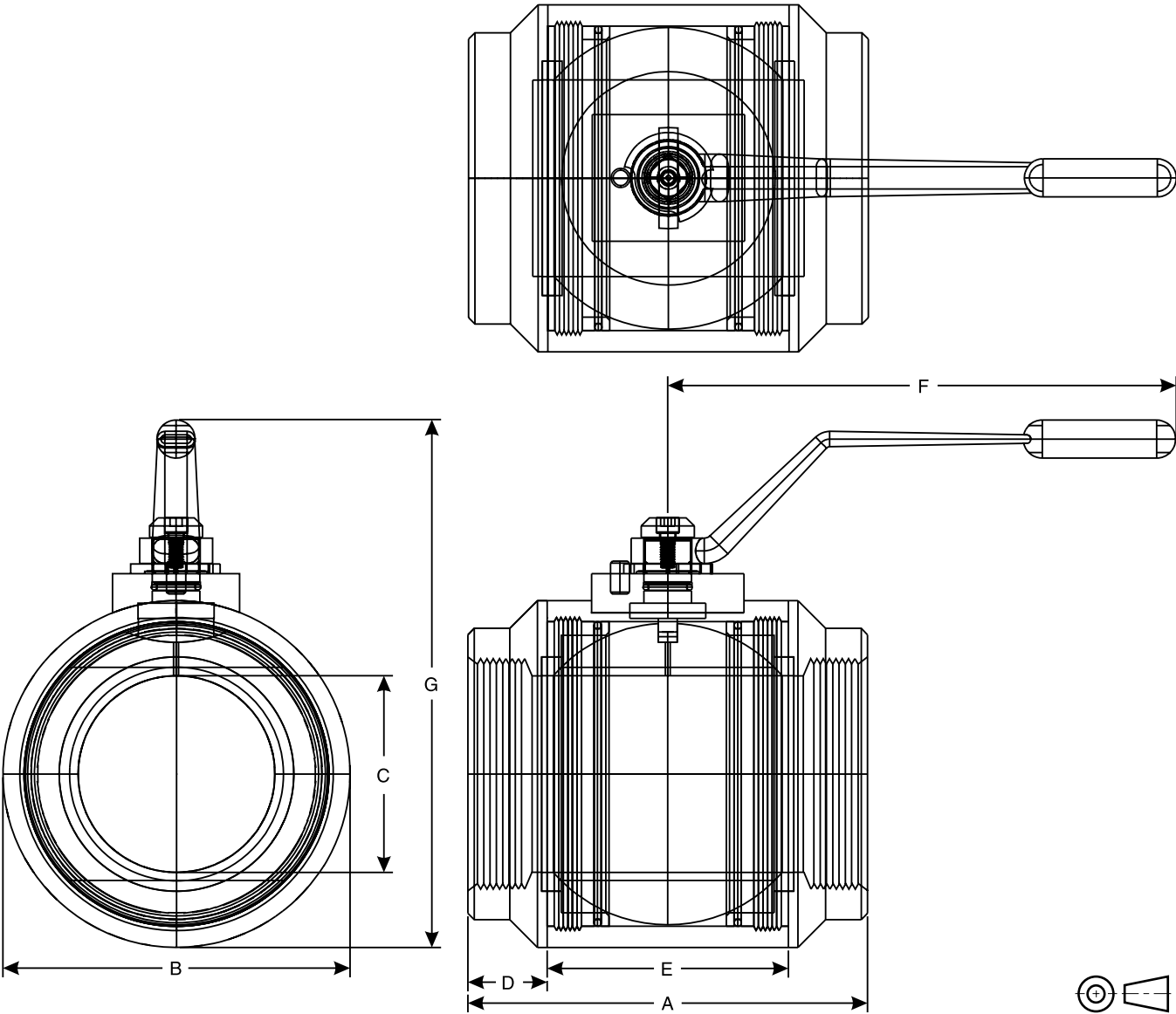
Code

Type

SK

Seal Kit

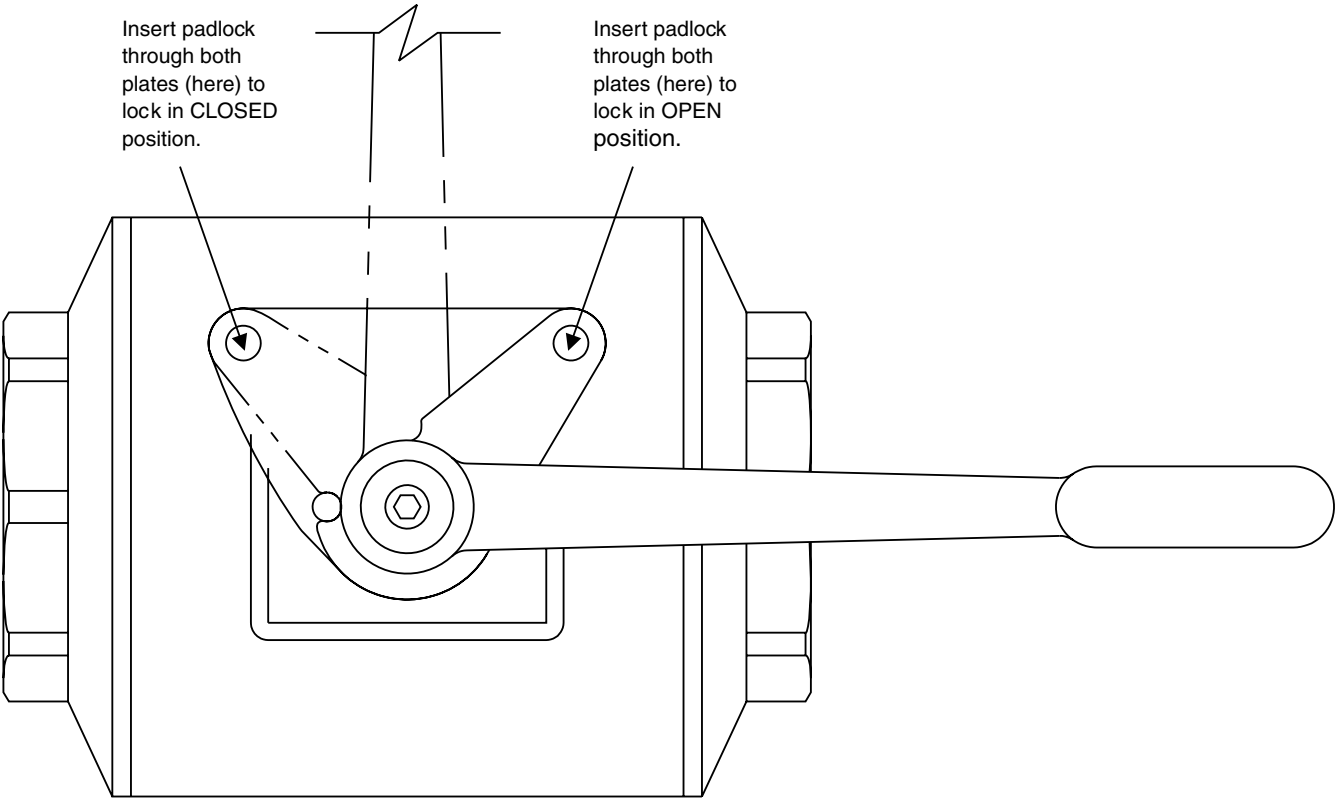
Threaded Ports



Code	Port Thread Size	Working Pressure	Dimensions mm (in)						
			A	B	C	D	E	F	G
40	2 1/2"	138 Bar (2000 PSI)	184.2 (7.25)	133.4 (5.25)	63.5 (2.50)	28.7 (1.13)	127.0 (5.00)	254.0 (10.00)	228.3 (8.99)
48	3"	138 Bar (2000 PSI)	221.2 (8.71)	158.8 (6.25)	76.2 (3.00)	35.1 (1.38)	151.4 (5.96)	254.0 (10.00)	253.7 (9.99)
64	4"	138 Bar (2000 PSI)	248.9 (9.80)	184.2 (7.25)	101.6 (4.00)	38.1 (1.50)	172.7 (6.80)	254.0 (10.00)	279.1 (10.99)



BVHPLK: Standard Series 'BVHPLK-*' kit replaces the stopwasher with a stationary and moving plate, as illustrated below. As the handle is actuated, the moving plate aligns with one of the two locking positions in the stationary plate, enabling the valve to be locked in either **fully closed** or **fully open** position.



Ordering Information

BVAM		Standard Locking (Part Number)
Code	Size	
40	2 1/2"	BVHPLK-4
48	3"	BVHPLK-4
64	4"	BVHPLK-4

