

## General Description

**A**

Series D10P directional control valves are 5-chamber, pilot operated valves. They are available in 2 or 3-position styles. These valves are manifold or subplate mounted, and conform to NFPA's D10, CETOP 10 mounting pattern.

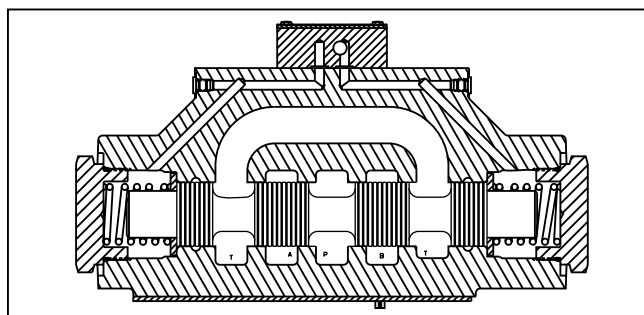
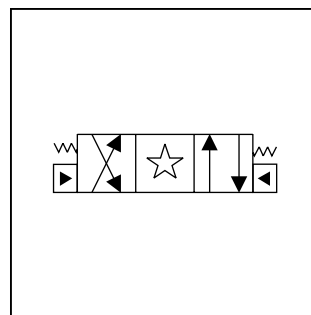
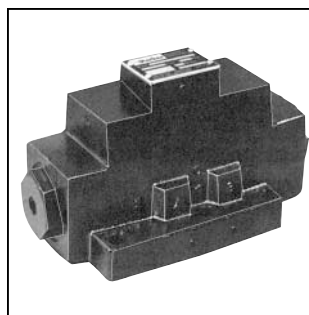
## Features

- Low pressure drop design.
- Hardened spools provide long life.

## Specifications

<b>Mounting Pattern</b>	NFPA D10, CETOP 10, NG32
<b>Max. Operating Pressure</b>	207 Bar (3000 PSI)
<b>Max. Tank Line Pressure</b>	207 Bar (3000 PSI)
<b>Max. Drain Pressure</b>	207 Bar (3000 PSI)
<b>Min. Pilot Pressure</b>	4.4 Bar (65 PSI)
<b>Max. Pilot Pressure</b>	207 Bar (3000 PSI)
<b>Nominal Flow</b>	378 LPM (100 GPM)
<b>Maximum Flow</b>	See Reference Chart

For flow path, pilot drain and pilot pressure details, see Installation Information.



## Response Time

Response time will vary with pilot line size, pilot line length, pilot pressure shift time and flow capacity of the control valve.

## Shift Volume

The pilot chamber requires a volume of 1.51 in<sup>3</sup> (24.75 cc) for center to end.

## Ordering Information

<div style="border: 1px solid black; padding: 2px; width: 40px; margin: 0 auto;">D</div> Directional Control Valve	<div style="border: 1px solid black; padding: 2px; width: 40px; margin: 0 auto;">10</div> Basic Valve	<div style="border: 1px solid black; padding: 2px; width: 40px; margin: 0 auto;">P</div> Actuator	<div style="border: 1px solid black; padding: 2px; width: 40px; margin: 0 auto;"></div> Spool	<div style="border: 1px solid black; padding: 2px; width: 40px; margin: 0 auto;"></div> Style	<div style="border: 1px solid black; padding: 2px; width: 40px; margin: 0 auto;"></div> Pilot Supply and Drain	<div style="border: 1px solid black; padding: 2px; width: 40px; margin: 0 auto;"></div> Seal Compound	<div style="border: 1px solid black; padding: 2px; width: 40px; margin: 0 auto;"></div> Variations	<div style="border: 1px solid black; padding: 2px; width: 40px; margin: 0 auto;"></div> Design Series																				
<div style="border: 1px solid black; padding: 5px; width: 100px; margin: 0 auto;">           NFPA D10 CETOP 10         </div>		<div style="border: 1px solid black; padding: 5px; width: 100px; margin: 0 auto;">           Oil Operator         </div>		<table border="1" style="width: 100%; border-collapse: collapse;"> <thead> <tr> <th>Code</th> <th>Symbol</th> </tr> </thead> <tbody> <tr> <td>1</td> <td></td> </tr> <tr> <td>2</td> <td></td> </tr> <tr> <td>4</td> <td></td> </tr> <tr> <td>8*</td> <td></td> </tr> <tr> <td>9**</td> <td></td> </tr> <tr> <td>11</td> <td></td> </tr> </tbody> </table> <p>* 8 spool has closed crossover.            ** 9 spool has open crossover.</p>		Code	Symbol	1		2		4		8*		9**		11		<table border="1" style="width: 100%; border-collapse: collapse;"> <thead> <tr> <th>Code</th> <th>Type</th> </tr> </thead> <tbody> <tr> <td>N</td> <td>Nitrile</td> </tr> <tr> <td>V</td> <td>Fluorocarbon</td> </tr> </tbody> </table>		Code	Type	N	Nitrile	V	Fluorocarbon	<p>NOTE: Not required when ordering.</p>
Code	Symbol																											
1																												
2																												
4																												
8*																												
9**																												
11																												
Code	Type																											
N	Nitrile																											
V	Fluorocarbon																											
<table border="1" style="width: 100%; border-collapse: collapse;"> <thead> <tr> <th>Code</th> <th>Description</th> </tr> </thead> <tbody> <tr> <td>2</td> <td>External — External</td> </tr> <tr> <td>5#</td> <td>External — Internal</td> </tr> </tbody> </table> <p># Available in "B" &amp; "H" styles only.</p>		Code	Description	2	External — External	5#	External — Internal	<table border="1" style="width: 100%; border-collapse: collapse;"> <thead> <tr> <th>Code</th> <th>Description</th> <th>Symbol</th> </tr> </thead> <tbody> <tr> <td>B†</td> <td>Sgl. solenoid, 2 position, spring offset. P to A and B to T in offset position.</td> <td></td> </tr> <tr> <td>C</td> <td>Dbl. solenoid, 3 position, spring centered.</td> <td></td> </tr> <tr> <td>H†</td> <td>Sgl. solenoid, 2 position, spring offset. P to B and A to T in offset position.</td> <td></td> </tr> </tbody> </table> <p>† Available with 1, 2, 4 &amp; 11 spools only.</p>		Code	Description	Symbol	B†	Sgl. solenoid, 2 position, spring offset. P to A and B to T in offset position.		C	Dbl. solenoid, 3 position, spring centered.		H†	Sgl. solenoid, 2 position, spring offset. P to B and A to T in offset position.								
Code	Description																											
2	External — External																											
5#	External — Internal																											
Code	Description	Symbol																										
B†	Sgl. solenoid, 2 position, spring offset. P to A and B to T in offset position.																											
C	Dbl. solenoid, 3 position, spring centered.																											
H†	Sgl. solenoid, 2 position, spring offset. P to B and A to T in offset position.																											

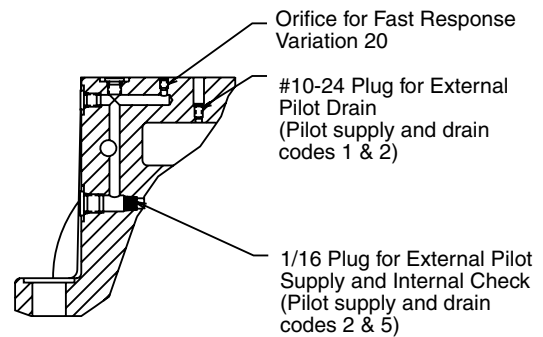
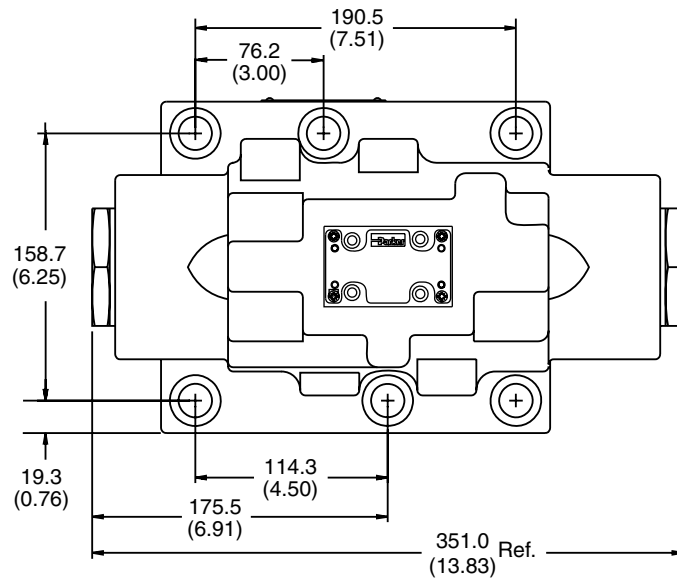
Valve schematic symbols are per NFPA/ANSI standards, providing flow P to A when energizing operator X. Note operators reverse sides on #8 and #9 spools. See installation information for details.

**Valve Weight:** 34.3 kg (75.7 lbs.)  
**Standard Bolt Kit:** BK229  
**Metric Bolt Kit:** BKM229

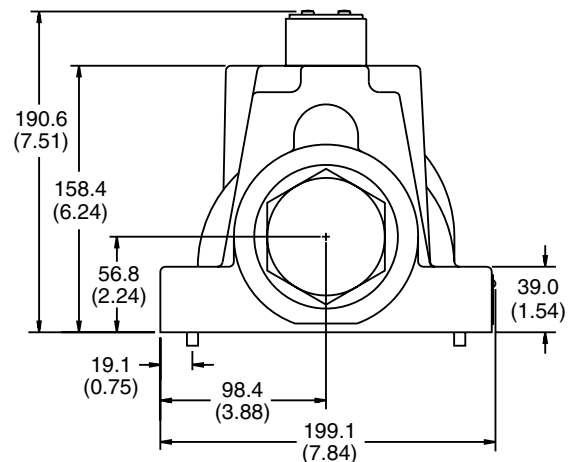
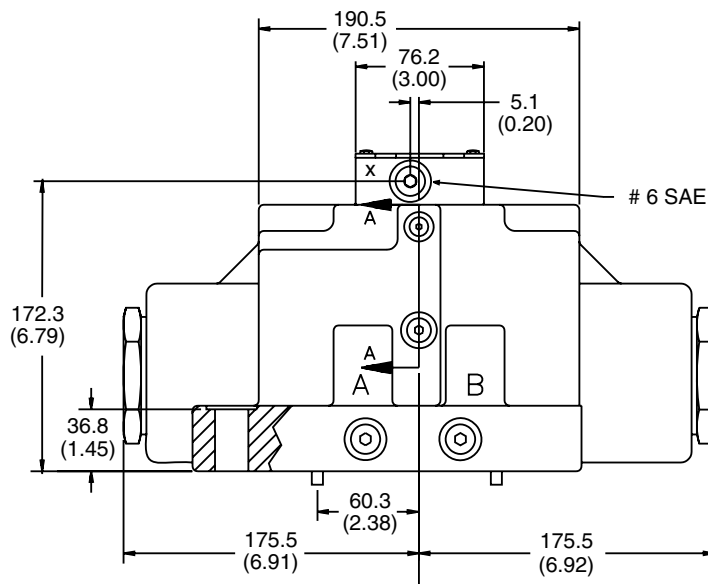
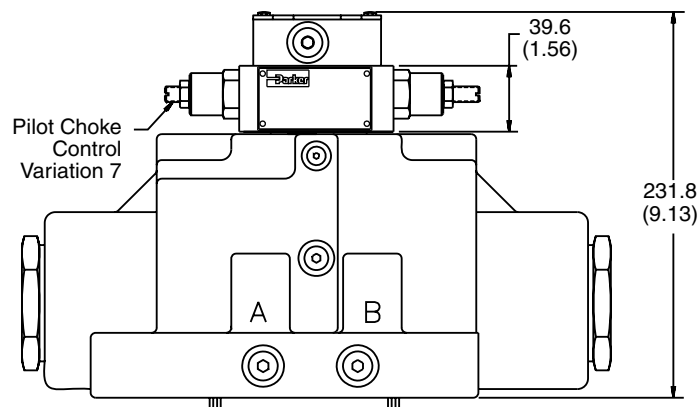
**Bold: Designates Tier I products and options.**

**Non-Bold: Designates Tier II products and options. These products will have longer lead times.**

Inch equivalents for millimeter dimensions are shown in (\*\*)

**Standard Pilot Operated****A**

Section A-A

**Note:** 36.83mm (1.45") from bottom of bolt hole counterbore to bottom of valve.**Pilot Operated with Pilot Choke Control****Note:** 36.83mm (1.45") from bottom of bolt hole counterbore to bottom of valve.